

PRUDENCE AVENUE

FROM
POCASSET AVE. TO PLAINFIELD ST.

IN THREE SHEETS

BOARD OF ALDERMEN

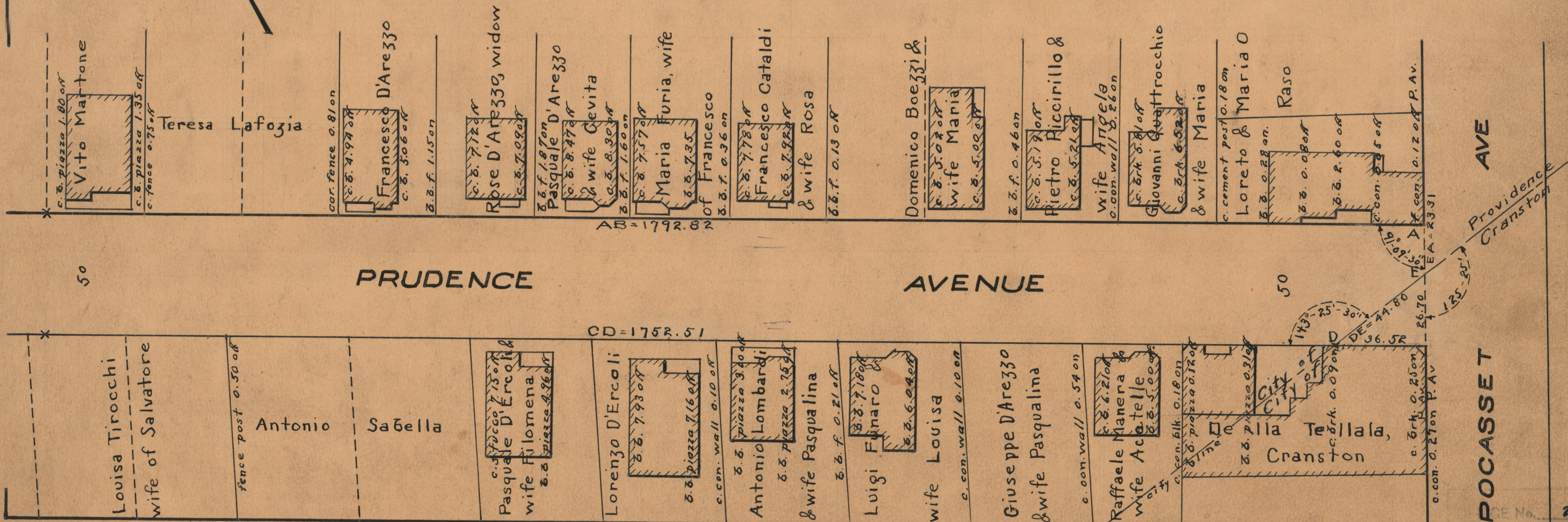
OCTOBER 16, 1930.

PROVIDENCE, R.I.
CITY ENGINEER'S OFFICE
STREET LINE DEPT.
Jan. 8, 1931

053300

Scale 1" = 40'

1792.82
1702.57
17045.33
1772.660
1704.40
1704.40



AVE

POCASSET

Providence
Cranston

PLAT No. 35335
DRAWER 86
SHEET B-81