

L.P.R. 2731-170

PROVIDENCE, R.I.
CITY ENGINEER'S OFFICE

STREET LINE DEPT.
Nov. 29, 1930.

053210

PLAT OF LAUREL AVENUE

FROM
GROTTO AVE. 310 FEET EASTERLY

BOARD OF ALDERMEN

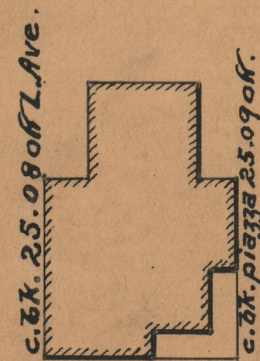
NOVEMBER 20, 1930

Scale 1" = 40'

310.00



AVE.



Donald S. Babcock

c. bk. wall 0.08 off.

Helen C. Putnam

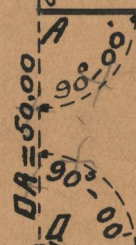


Granite bound 0.07 off

Butler Hospital

Butler

Hospital



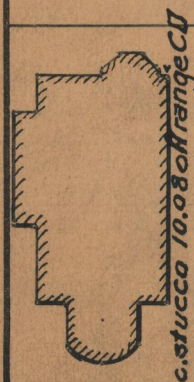
AB = 310.00

LAUREL AVENUE



DC = 310.00

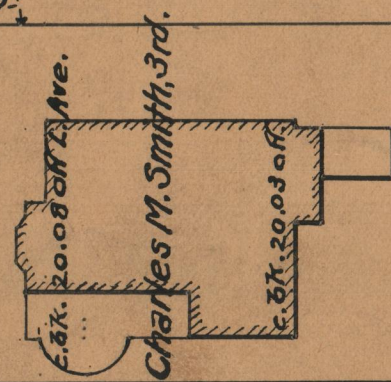
The area indicated by the letters BEFGCB was abandoned as a public highway July 31, 1930.



cor. wall on line L. Ave.

GROTTO

Granite bound 0.03 on L. Ave.



Charles M. Smith, 3rd.

cor. capstone 0.15 on.

Edwin H. Arnold Minnie S. Spicer, wife of William A.

OFFICE No. 25314

DRAWER 86

SHEET B-76