

PLAT OF CHACE AVENUE

FROM
HOPE ST. TO TOP ST.

IN TWO SHEETS

BOARD OF ALDERMEN

NOVEMBER 20, 1930.

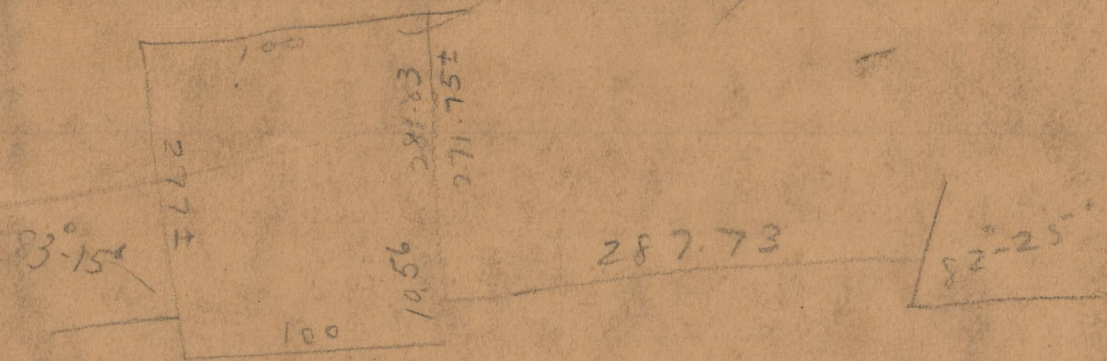
CITY ENGINEER'S OFFICE

STREET LINE DEPT.

Nov. 29, 1930.

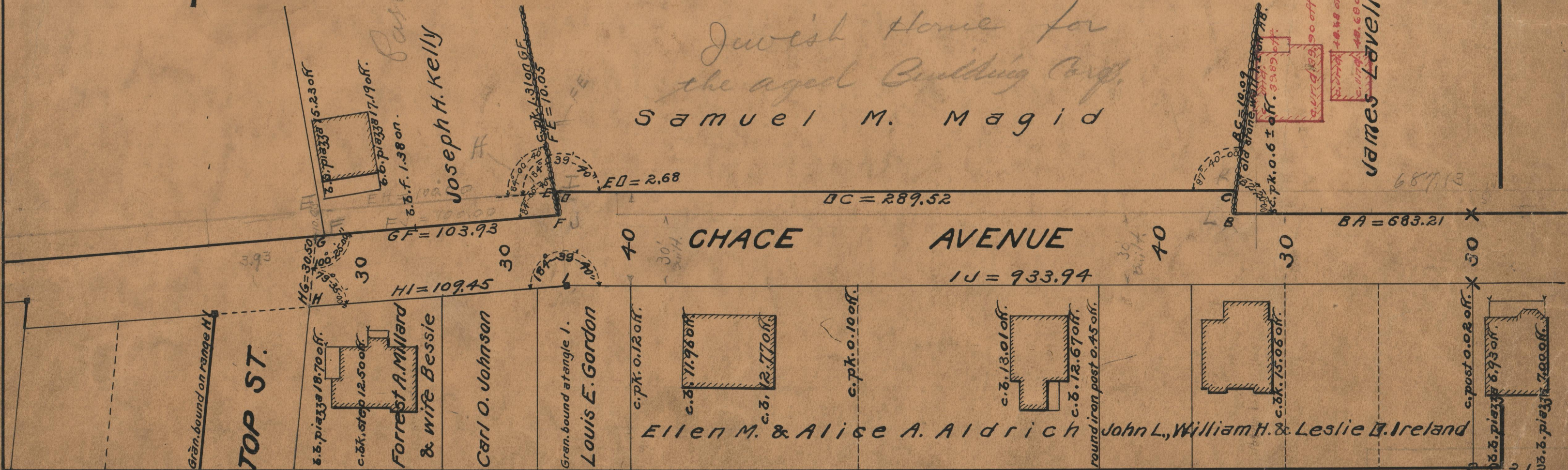
053208

Scale 1" = 40'



*Jewish Home for
the aged Building Corp.*
SAMUEL M. MAGID

James Lavell



25312