

PROVIDENCE, R.I.
CITY ENGINEER'S OFFICE
STREET LINE DEPT.
Nov. 29, 1930.



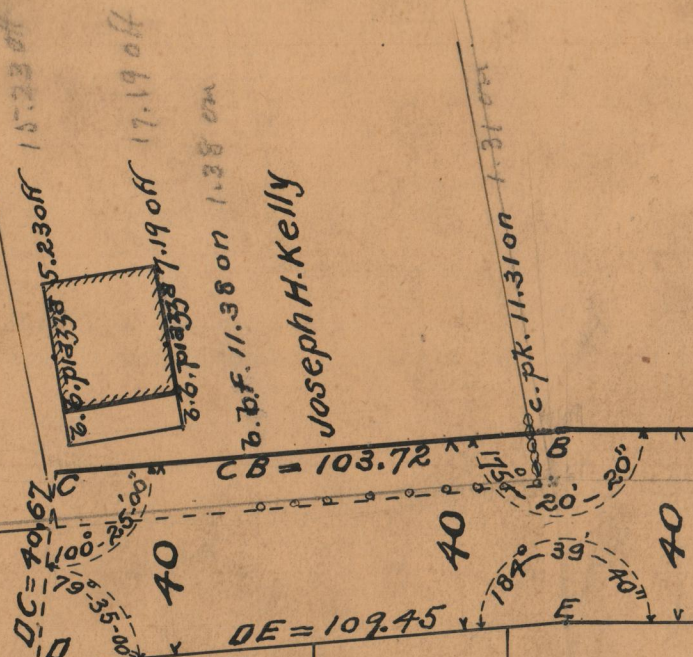
Samuel M. Magid

James Lavelle

CHACE AVENUE

BA = 976.65

EF = 933.94



286.58
4.69
291.24 ±
290. ±
287.73
3.61 970.97
284.12

meas 288.80

97-40

Old stone wall 9.1 ft. on. ± off
c.p.k. 9.4 ± on. 0.6 ± off

Picket Fence

Gran. bound on range E

TOP ST.

c.b. pier 18.70 off
c.b.k. step 12.50 off

Forrest A. Minard
& wife Bessie

Carl O. Johnson

Gran. bound at angle E
Louis E. Gordon

c.p.k. 0.12 off

Ellen M. & Alice A. Aldrich

c.p.k. 0.10 off.

round iron post 0.75 off.

John L., William H. & Leslie D. Ireland

c. post 0.02 off.

OFFICE
DRAW 86
SHEET B-74

86/B 73 74