

SHEET TWO

PLAT OF

CHACE AVENUE

FROM HOPE STREET TO TOP STREET

IN TWO SHEETS

BOARD OF ALDERMEN

NOVEMBER 20, 1930

PROVIDENCE, R. I.
CITY ENGINEER'S OFFICE
STREET LINE DEPT.

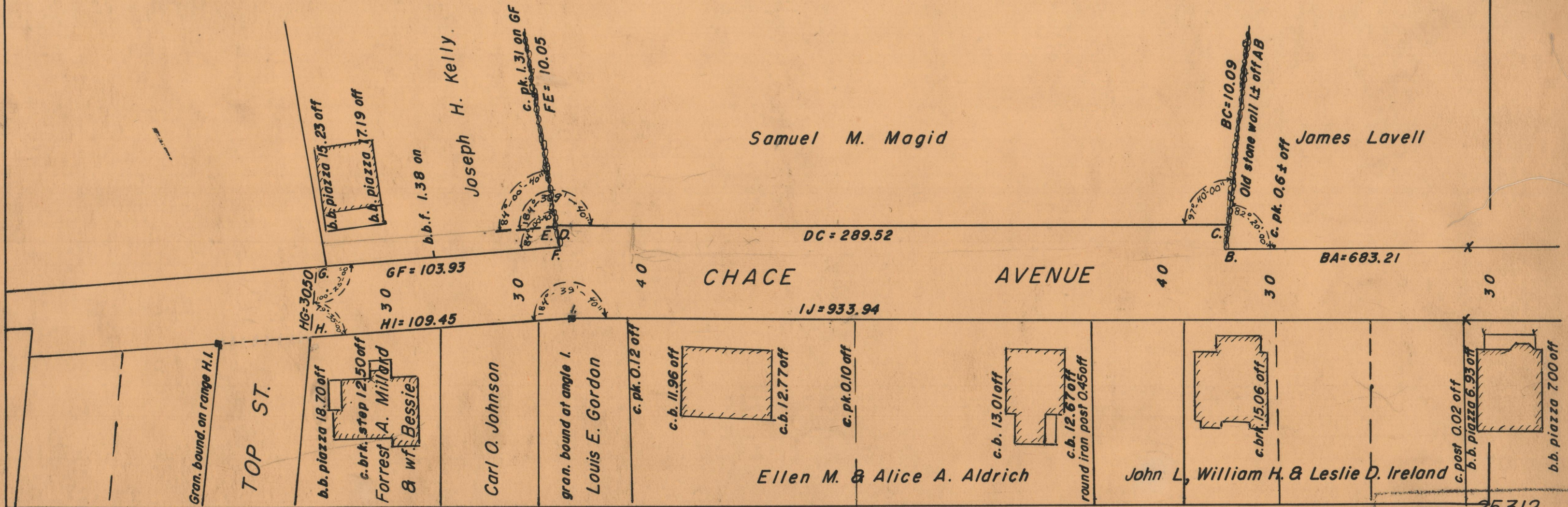
053209

November 29, 1930



Scale 1"=40'

See 767 B
54



OFFICE No.	25312
DRAWER	86
SHEET	B-74