

# PLAT OF CHACE AVENUE

FROM  
HOPE ST. TO TOP ST.

IN TWO SHEETS.

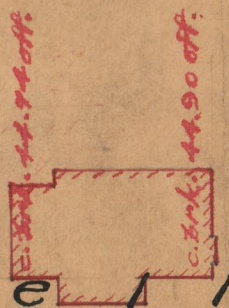
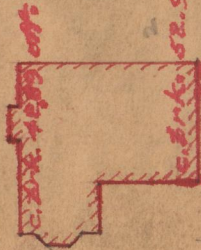
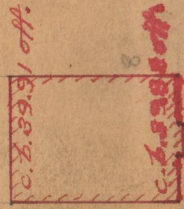
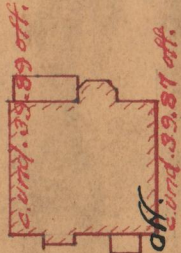
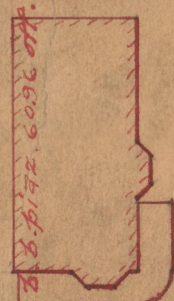
BOARD OF ALDERMEN

NOVEMBER 20, 1930

ENGINEER'S OFFICE  
STREET LINE DEPT.  
Nov. 29, 1930.  
053207

Scale 1" = 40'

683.21	903.94	1063.39
289.52	109.45	1076.66
103.93	20.00	2140.05
1076.66	1063.39	1070.025



BA = 683.21

## CHACE AVENUE

14 = 933.94

c. posto 0.22 off.  
George A. Garvin & wife Elizabeth  
c. bk. 123.39 off.

face con. bk. piazza 6.78 off.  
Theresa V. & Grace G. Garvin  
face con. bk. piazza 6.78 off.

Nils I. Anderson & wife Emma S.  
c. bk. 8.53 off.  
c. bk. 8.51 off.

und. piazza 10.21 off.  
Lloyd O. Greene & wife Lena A.  
c. bk. 10.74 off.

c. con. 13.58 off.  
Hugh B. Donley & wife Anna M.  
cen. con. step 0.28 off.  
c. con. 13.58 off.

c. bk. 13.52 off.  
Charles Haggerty & wife Mary F.  
cen. con. step 1.13 off.  
c. bk. 13.51 off.

c. bk. 13.50 off.  
Mathew J. & Debra M. Werker  
c. bk. 13.47 off.

Joseph F. Gallagher & Daniel J. Mooney  
+ wife Betty

Robert & Mary Murray  
c. bk. 13.48 off.

c. bk. 1.07 off.  
Margaret E. Thornley wife of Walter E.  
c. bk. 12.40 off.



Lorrin S. Brice

HOPE ST.

ST.