

SHEET ONE

PLAT OF

# CHACE AVENUE

FROM HOPE STREET TO TOP STREET

IN TWO SHEETS

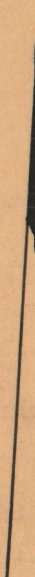
BOARD OF ALDERMEN

NOVEMBER 20, 1930

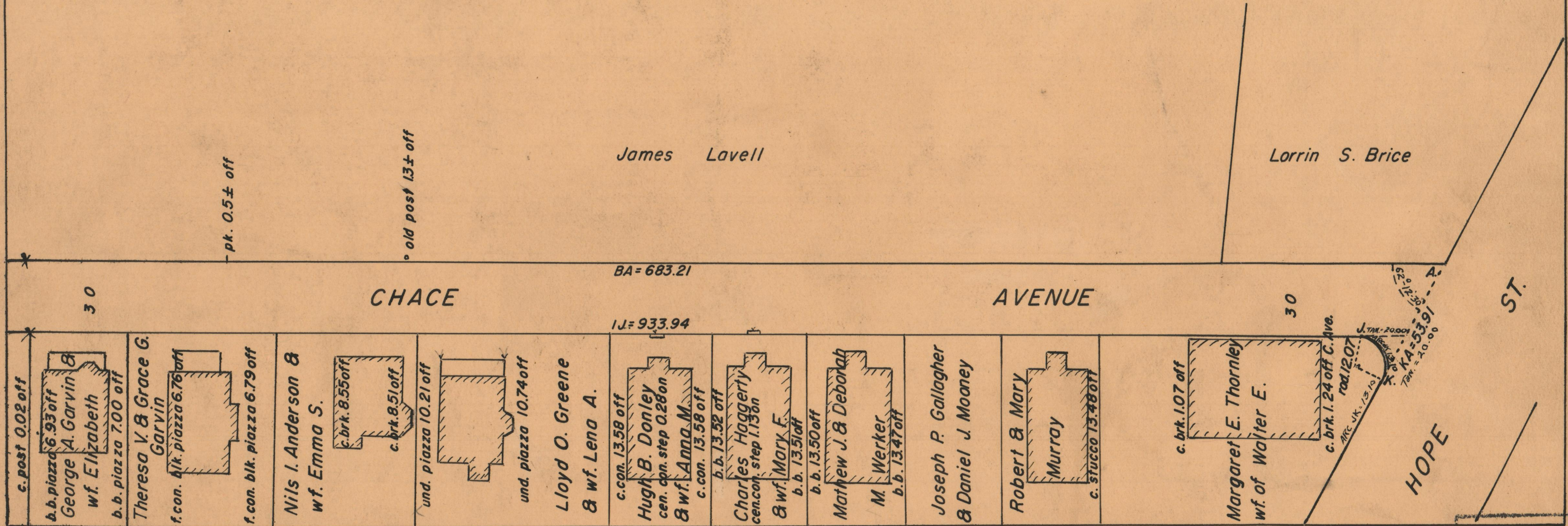
PROVIDENCE, R. I.  
CITY ENGINEER'S OFFICE  
STREET LINE DEPT.  
053207

November 29, 1930

N.



Scale 1"=40'



pk. 0.5± off

old post 1.3± off

James Lavell

Lorrin S. Brice

BA = 683.21

CHACE

AVENUE

LJ = 933.94

c. post 0.02 off  
b. b. piazza 6.93 off  
George A. Garvin &  
wf. Elizabeth  
b. b. piazza 7.00 off

Theresa V. & Grace G.  
Garvin  
f. con. blk. piazza 6.76 off  
f. con. blk. piazza 6.79 off

Nils I. Anderson &  
wf. Emma S.  
c. brk. 8.55 off  
c. brk. 8.51 off

und. piazza 10.21 off  
und. piazza 10.74 off  
Lloyd O. Greene  
& wf. Lena A.

c. con. 13.58 off  
Hugh B. Donley  
cen. con. step 0.28 on  
& wf. Anna M.  
c. con. 13.58 off

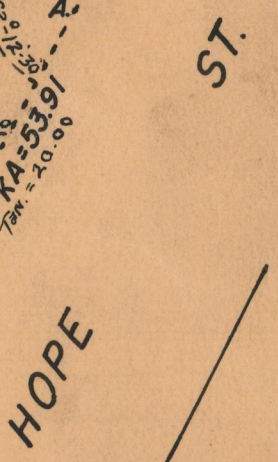
b. b. 13.52 off  
Charles Haggerty  
cen. con. step 1.15 on  
& wf. Mary F.  
b. b. 13.51 off

b. b. 13.50 off  
Mathew J. & Deborah  
M. Werker  
b. b. 13.47 off

Joseph P. Gallagher  
& Daniel J. Moaney

Robert & Mary  
Murray  
c. stucco 13.48 off

c. brk. 1.07 off  
Margaret E. Thornley  
wf. of Walter E.  
c. brk. 1.24 off C. Ave.  
rad. 12.07  
J. TM. 20.00  
K. KA = 53.91  
Tan. = 20.0°



OFFICE No. 25311  
DRAWN BY 86  
SHEET B-73