

J. L. E. 2824-9

PROVIDENCE, R.I.
CITY ENGINEER'S OFFICE

STREET LINE DEPT.
Nov. 29, 1930.

053205

PLAT OF

ALOE STREET

FROM

BROAD ST. TO RUGBY ST.

BOARD OF ALDERMEN

NOVEMBER 20, 1930.

New Parkview

Scale 1" = 40'

363.81
339.64
2703.46
351.72

363.81
339.64
2703.46
351.72



BROAD ST.

BROAD

Thomas McGrath

William F. Schoeninger

Jane E. Smith

Helmy H. Johnson,
wife of Charles E.

Antoinette Goldowsky,
wife of Bernard M.

Richard W. Nieman
& wife Estelle B.

Margaret McNulty

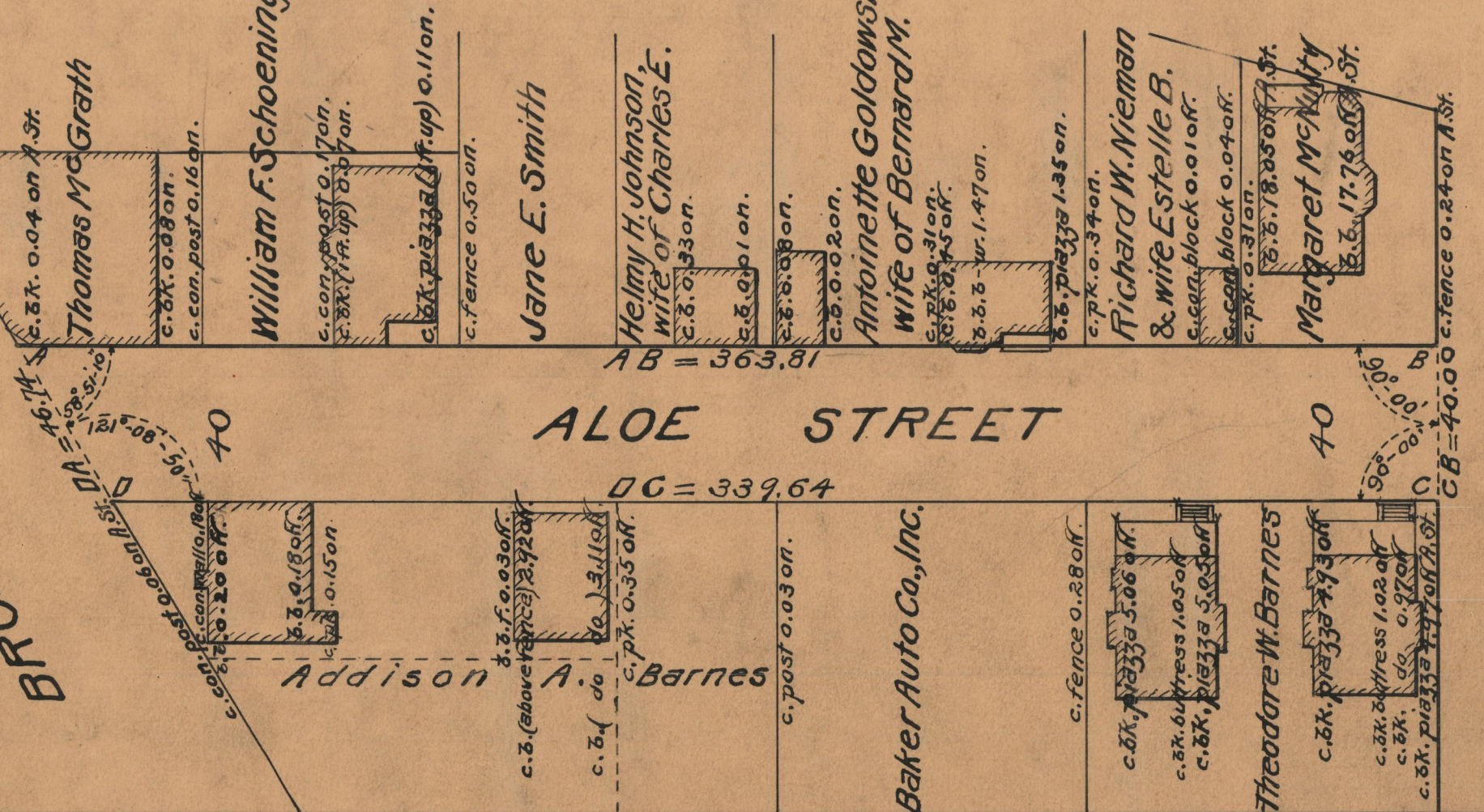
ALOE STREET

Addison A. Barnes

Baker Auto Co., Inc.

Theodore W. Barnes

RUGBY ST.



OFFICE No. 25309
DRAWER " 86
SHEET " B-71