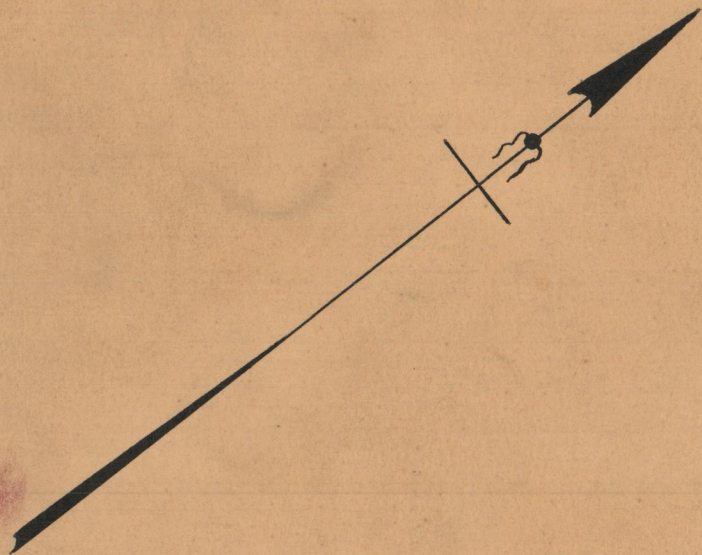


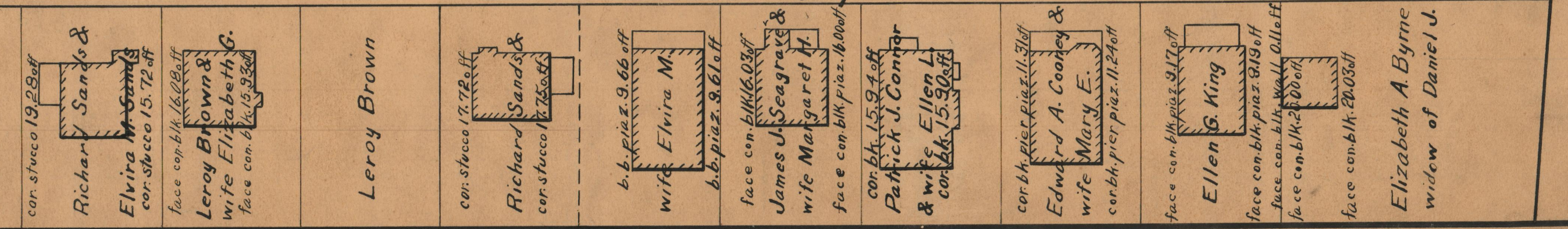
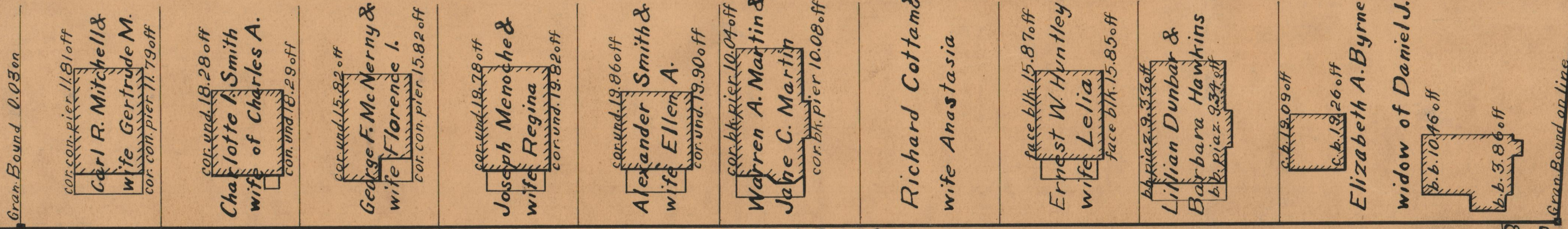
PROVIDENCE, R.I.
CITY ENGINEER'S OFFICE
STREET LINE DEPT.
Nov. 14, 1930.
053166

PLAT OF LENNON STREET

FROM MT. PLEASANT AVE. TO SMITH ST.
IN TWO SHEETS
BOARD OF ALDERMEN
OCTOBER 16, 1930.



Scale 1" = 40'



SMITH ST.

OFFICE NO. 25278
DRAWER " 86
SHEET " B-69