

# PLAT OF LYNCH STREET

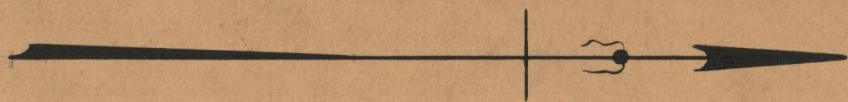
FROM FAIRVIEW ST. TO CHALKSTONE AVE.

IN TWO SHEETS  
BOARD OF ALDERMEN

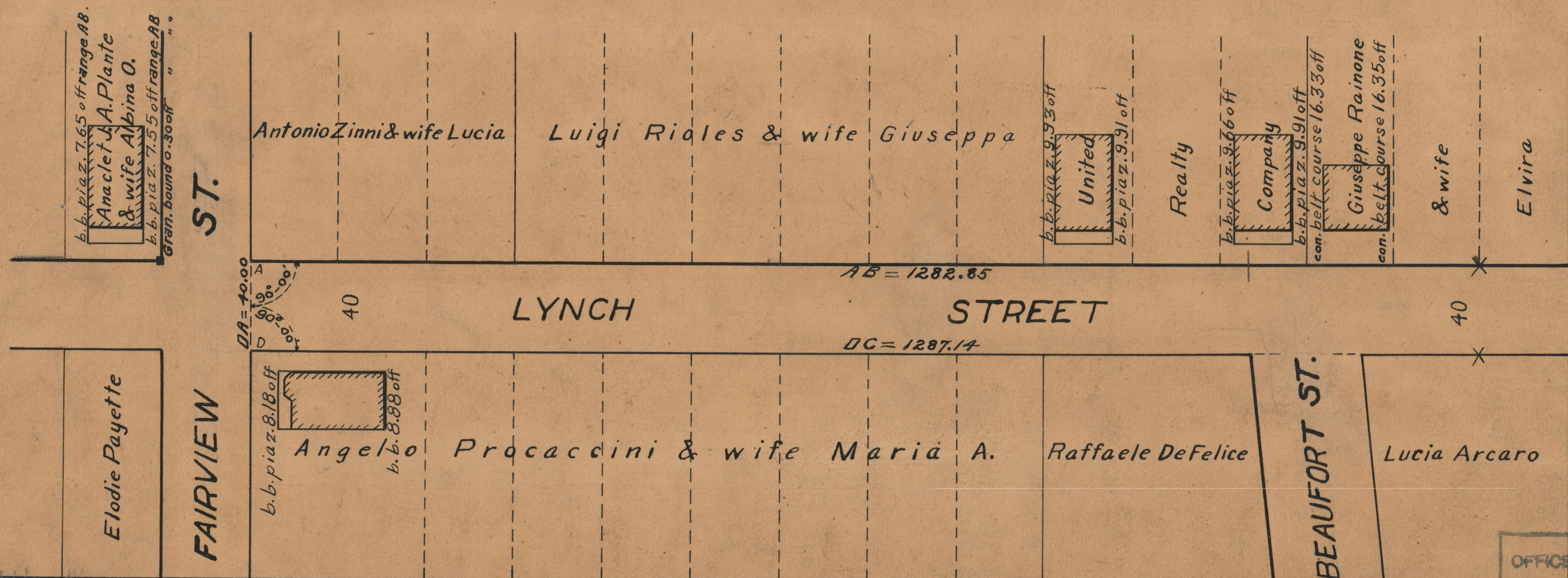
June 19, 1930

PROVIDENCE, R.I.  
CITY ENGINEER'S OFFICE

STREET LINE DEPT.  
*Sept. 3, 1930.*  
*053049*



Scale 1" = 50'



OFFICE No.	25243
DRAWER	86
SHEET	B-57