

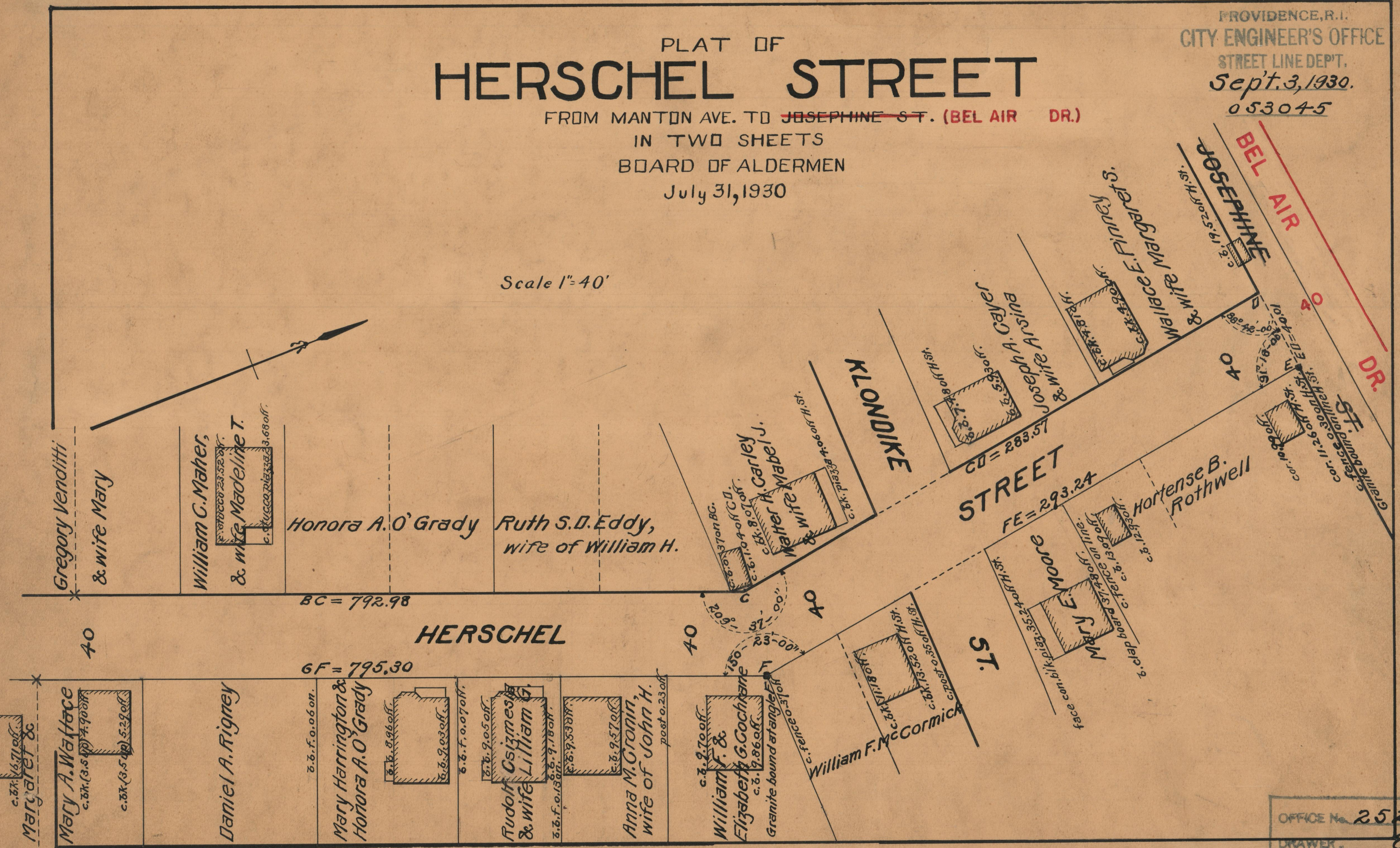
PLAT OF HERSCHEL STREET

FROM MANTON AVE. TO ~~JOSEPHINE ST.~~ (BEL AIR DR.)

IN TWO SHEETS
BOARD OF ALDERMEN
July 31, 1930

PROVIDENCE, R.I.
CITY ENGINEER'S OFFICE
STREET LINE DEPT.
Sept. 3, 1930.
053045

Scale 1"=40'



OFFICE No.	25239
DRAWER	86
SHEET	B-53