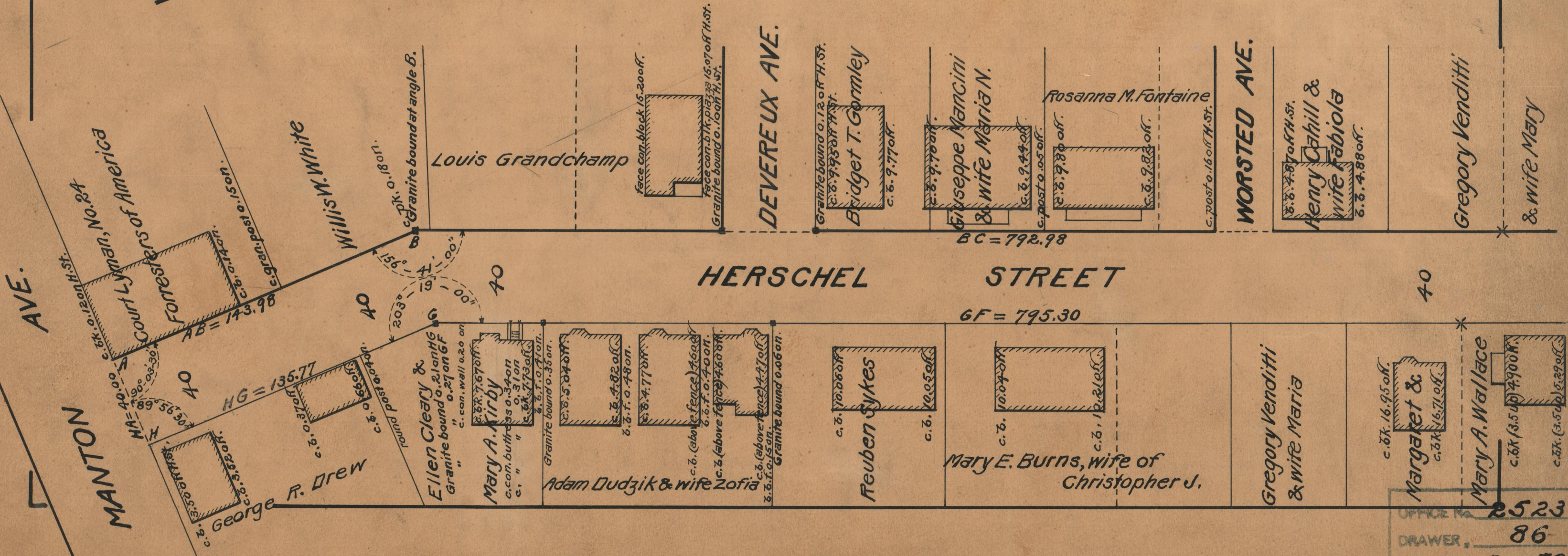
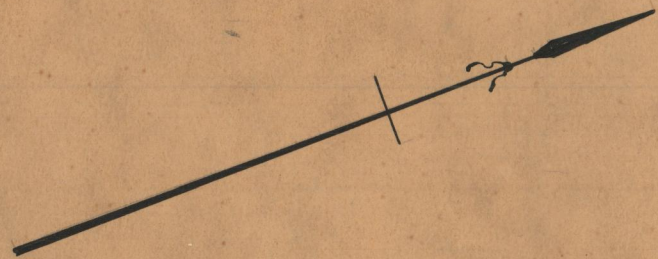


PLAT OF HERSCHEL STREET

FROM MANTON AVE. TO JOSEPHINE ST.
IN TWO SHEETS
BOARD OF ALDERMEN
July 31, 1930

PROVIDENCE, R.I.
CITY ENGINEER'S OFFICE
STREET LINE DEPT.
Sept. 3, 1930.
053044

Scale 1" = 40'



HERSCHEL STREET

BC = 792.98

GF = 795.30

OFFICE No. 25238
DRAWER 86
SHEET B-52