

PROVIDENCE, R.I.  
CITY ENGINEER'S OFFICE

STREET LINE DEPT.

Aug. 13, 1930.

053013

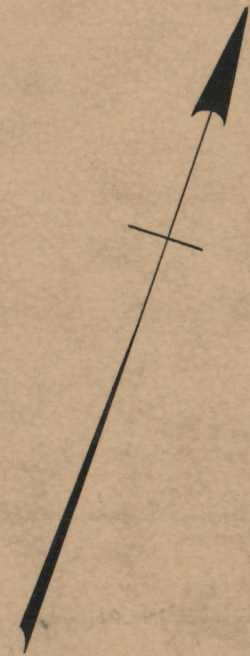
# PLAT OF O'CONNELL STREET

FROM ALLENS AVE. TO A POINT 683.44 FEET WESTERLY

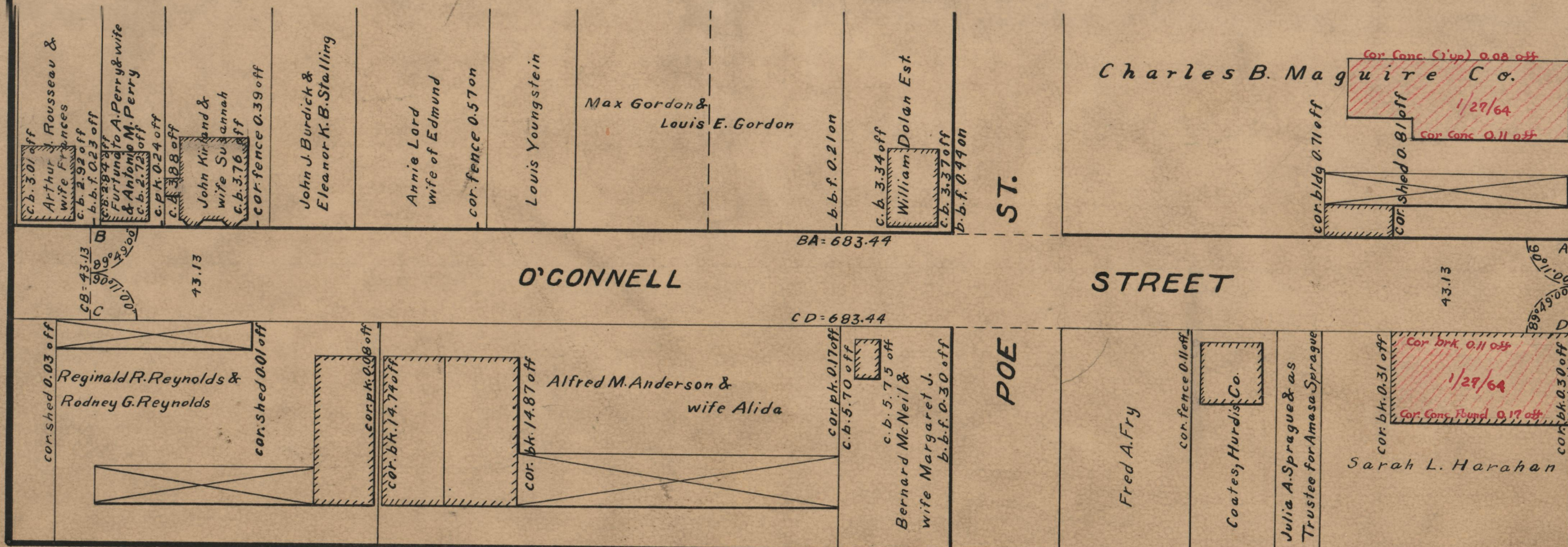
BOARD OF ALDERMEN

June 19, 1930

683.44  
403.71



Scale 1"=50'



OFFICE No. 25224  
 DRAWER 86  
 SHEET B-45