

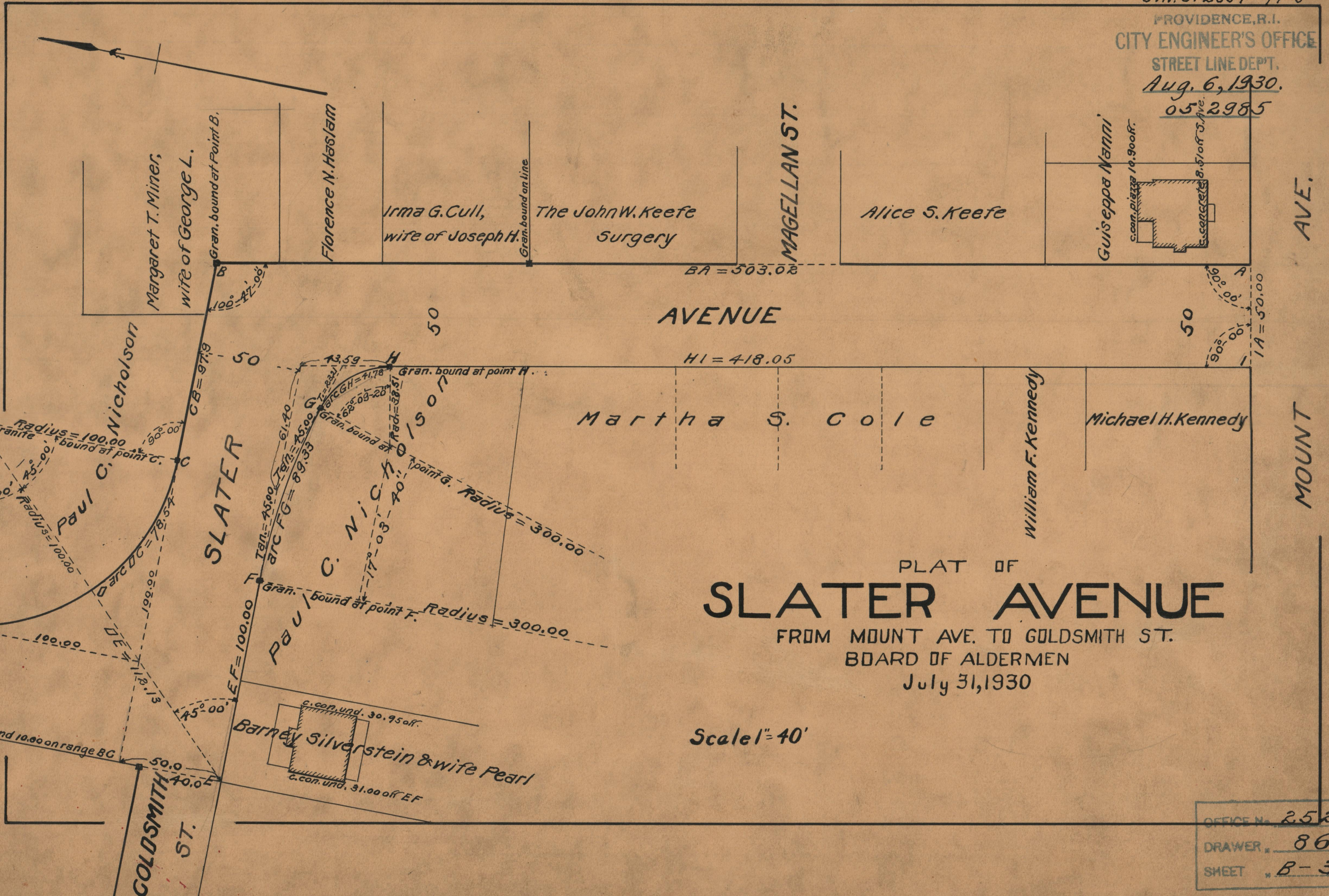
J.N.O. 2654-94-5

PROVIDENCE, R.I.  
CITY ENGINEER'S OFFICE

STREET LINE DEPT.

Aug. 6, 1930.

052985



AVENUE

HI = 418.05

Martha S. Cole

Michael H. Kennedy

PLAT OF  
**SLATER AVENUE**

FROM MOUNT AVE. TO GOLDSMITH ST.

BOARD OF ALDERMEN

July 31, 1930

Scale 1" = 40'

OFFICE NO.	25202
DRAWER	86
SHEET	B-33