

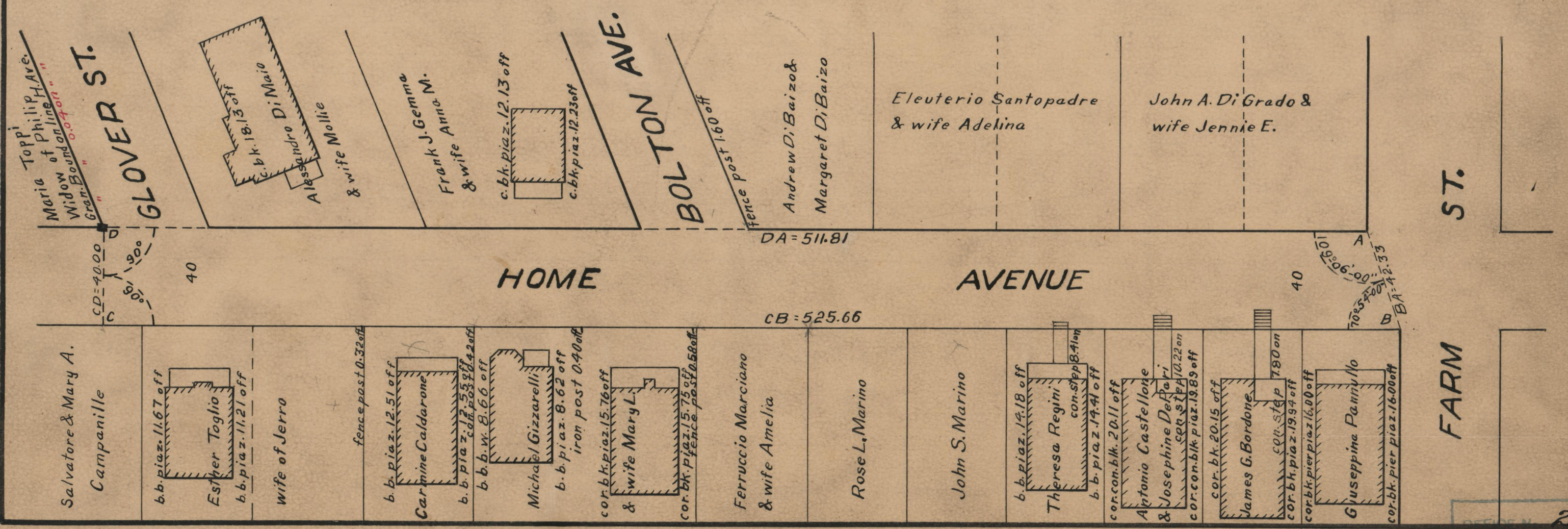
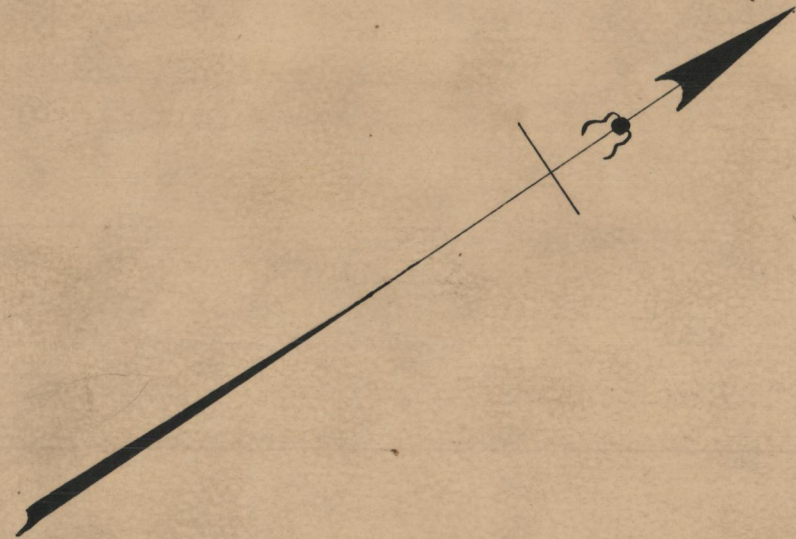
PLAT OF
HOME AVENUE

FROM FARM ST. TO WEST LINE OF GLOVER ST.

BOARD OF ALDERMEN

July 31, 1930

Scale 1"=40'



GLOVER ST.
BOLTON AVE.
FARM ST.

OFFICE NO. 25201
DRAWER 86
SHEET B-32