

PLAT OF HANCOCK STREET

FROM VERNDAL E AVE. TO BABCOCK ST.

BOARD OF ALDERMEN

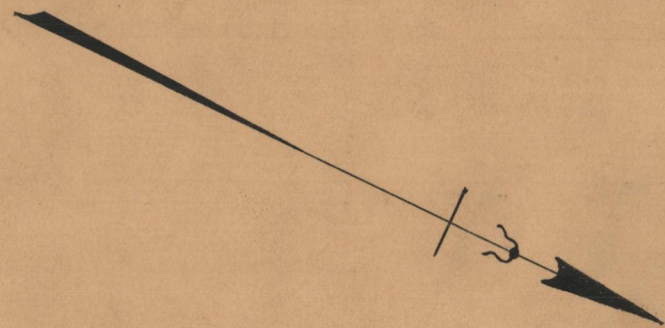
JULY 31, 1930.

PROVIDENCE, R.I.
CITY ENGINEER'S OFFICE

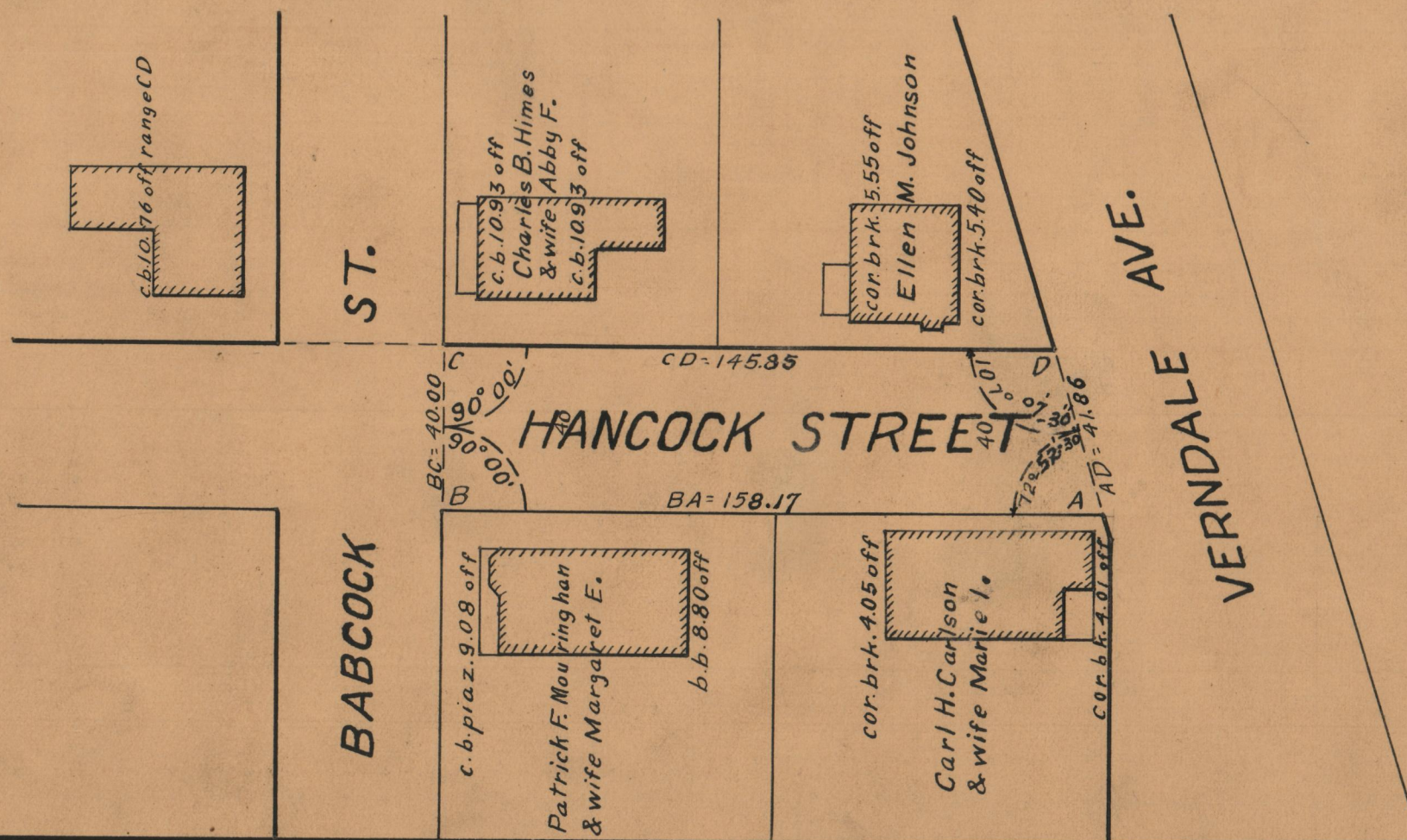
STREET LINE DEPT.

Aug. 5, 1930.

052981



Scale 1"=40'



OFFICE No.	25198
DRAWER	86
SHEET	B-31