

PLAT OF MERIDIAN STREET

FROM EATON ST. TO WALTON ST.

IN TWO SHEETS

BOARD OF ALDERMEN

June 19, 1930

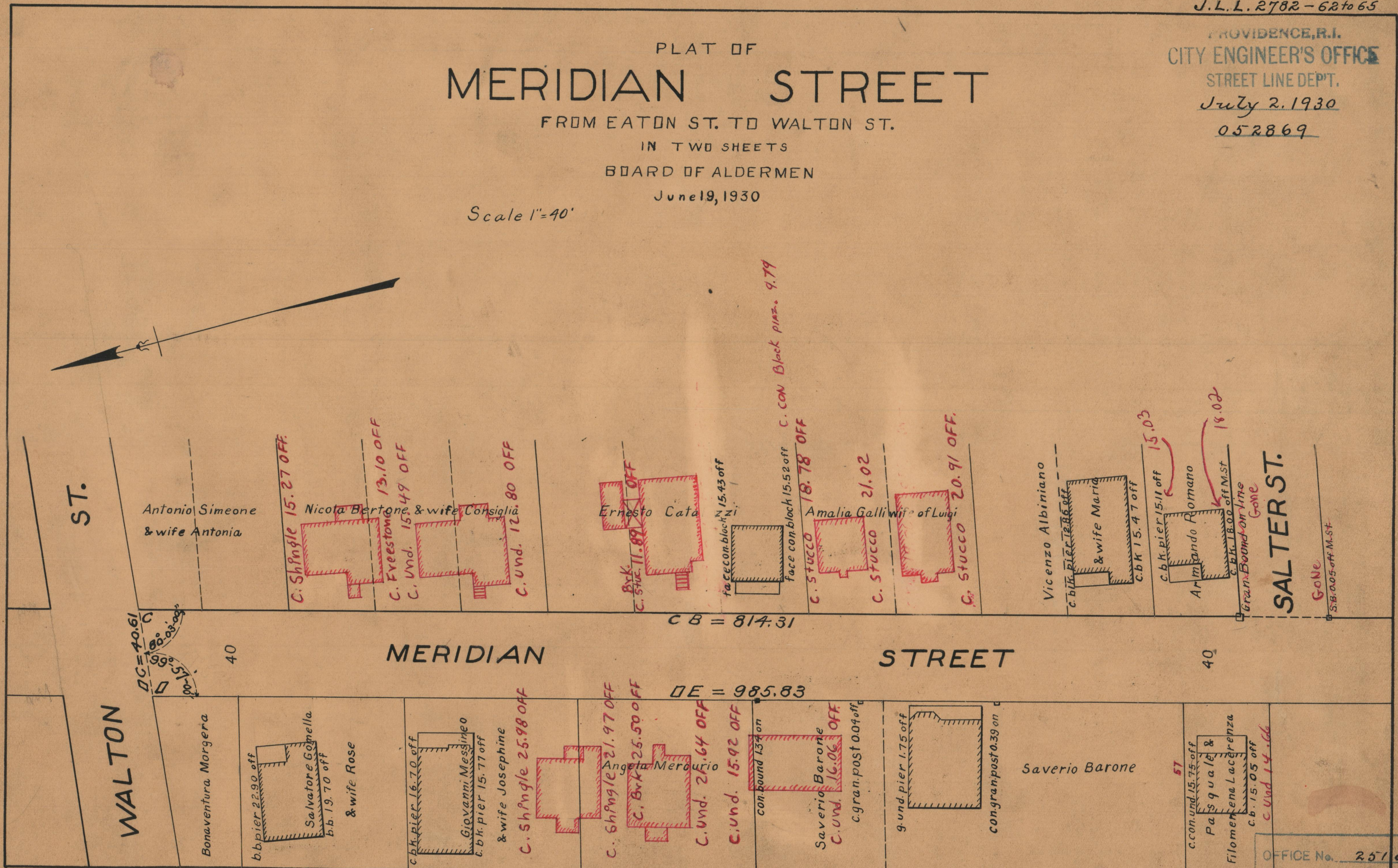
Scale 1"=40'

PROVIDENCE, R.I.
CITY ENGINEER'S OFFICE

STREET LINE DEPT.

July 2, 1930

052869



ST.

Antonio Simeone
& wife Antonia

C. Shingle 15.27 OFF.

Nicola Bertone & wife Consiglia

C. Firestone 13.10 OFF

C. Und. 15.49 OFF

C. Und. 12.80 OFF

Ernesto Cata

Brk. 11.89 OFF

face con. block 15.43 off

face con. block 15.52 off

C. STUCCO 18.78 OFF

C. STUCCO 21.02

C. STUCCO 20.91 OFF.

Vicenzo Albiniano

c. bk. pier 12.86 off

& wife Maria

C. BK 15.47 off

c. bk. pier 15.11 off

Armando Romano

c. bk. 18.00 off M. St.

Gran. Bound on line

SALTER ST.

GONE

S.B. 0.05 off M. St.

∠C = 40.61

∠D = 99.57

40

MERIDIAN

CB = 814.31

STREET

40

DE = 985.83

WALTON

Bonaventura Morgera

b. bk. pier 22.90 off

Salvatore Gonnella

b. bk. pier 19.70 off

& wife Rose

c. bk. pier 16.70 off

Giovanni Mesineo

c. bk. pier 15.77 off

& wife Josephine

C. Shingle 25.98 OFF

C. Shingle 21.97 OFF

C. Brk 25.50 OFF

C. Und. 21.64 OFF

C. Und. 15.92 OFF

con. bound 13.4 on

Saverio Barone

C. Und. 16.06 OFF

c. gran. post 0.04 off

g. und. pier 1.75 off

Saverio Barone

con. gran. post 0.39 on

57

c. con. und. 15.75 off

Paquale & Filomena Lacenza

c. b. 15.05 off

C. Und. 14.66

| | |
|------------|-------|
| OFFICE No. | 25107 |
| DRAWER | 86 |
| SHEET | B-19 |