

PROVIDENCE, R.I.
CITY ENGINEER'S OFFICE

STREET LINE DEPT.

July 2, 1930

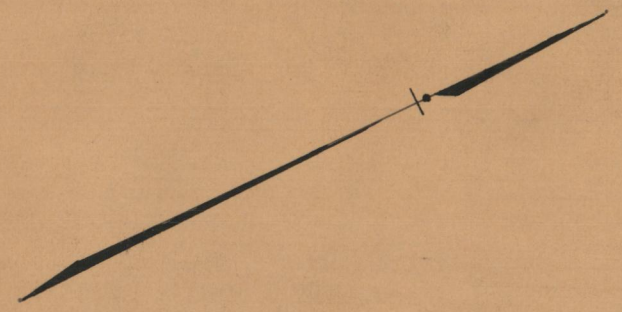
052866

PLAT OF
NOYES AVENUE

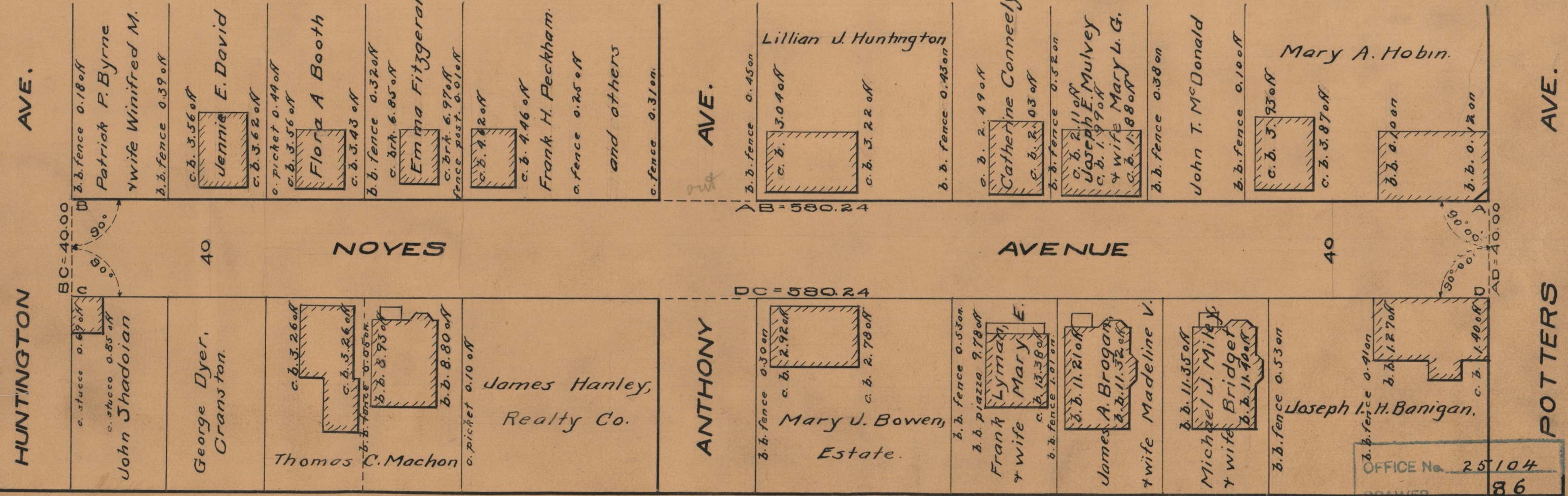
FROM
POTTERS AVE. TO HUNTINGTON AVE.

BOARD OF ALDERMEN

JUNE 19, 1930



Scale = 1" = 40'



OFFICE No.	25104
DRAWER	86
SHEET	B-16