

PLAT OF ALUMNI AVENUE

FROM HOPE ST. TO PENNINGTON AVE.

IN TWO SHEETS
BOARD OF ALDERMEN
May 15, 1930

CITY ENGINEER'S OFFICE

STREET LINE DEPT.

July 2, 1930

052860

Scale 1" = 40'

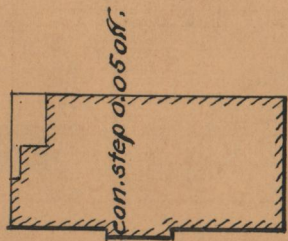


HOPE ST.

HOPE

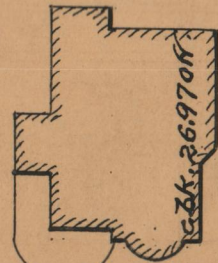
Gran. bound 3.00 on range CD. DA = 50.00 Granite bound on line A. Ave.

50
50
50
50



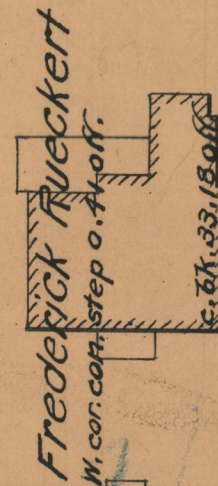
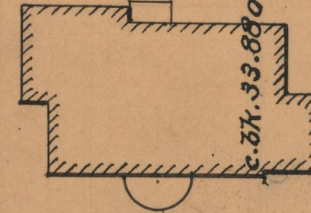
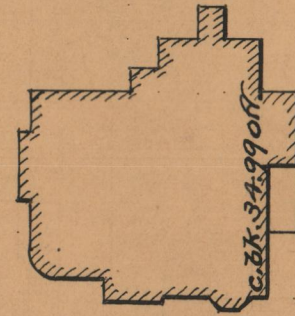
Annie Levye

George M. Snow

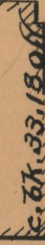


AB = 906.45

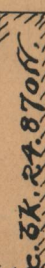
Ethel W. Mandeville
Edwin P. Lewis



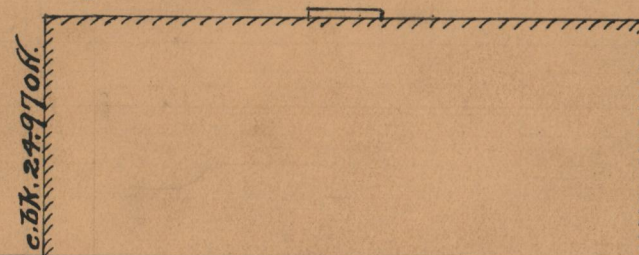
Frederick Rueckert



Charles L. Robinson



City of Providence



Gran. bound 3.00 on range CD. Round iron post 0.06 off.

Yearly Meeting of Friends for New England

DC = 906.45

OFFICE No. 25098

DRAWER " 86

SHEET " B - 10