

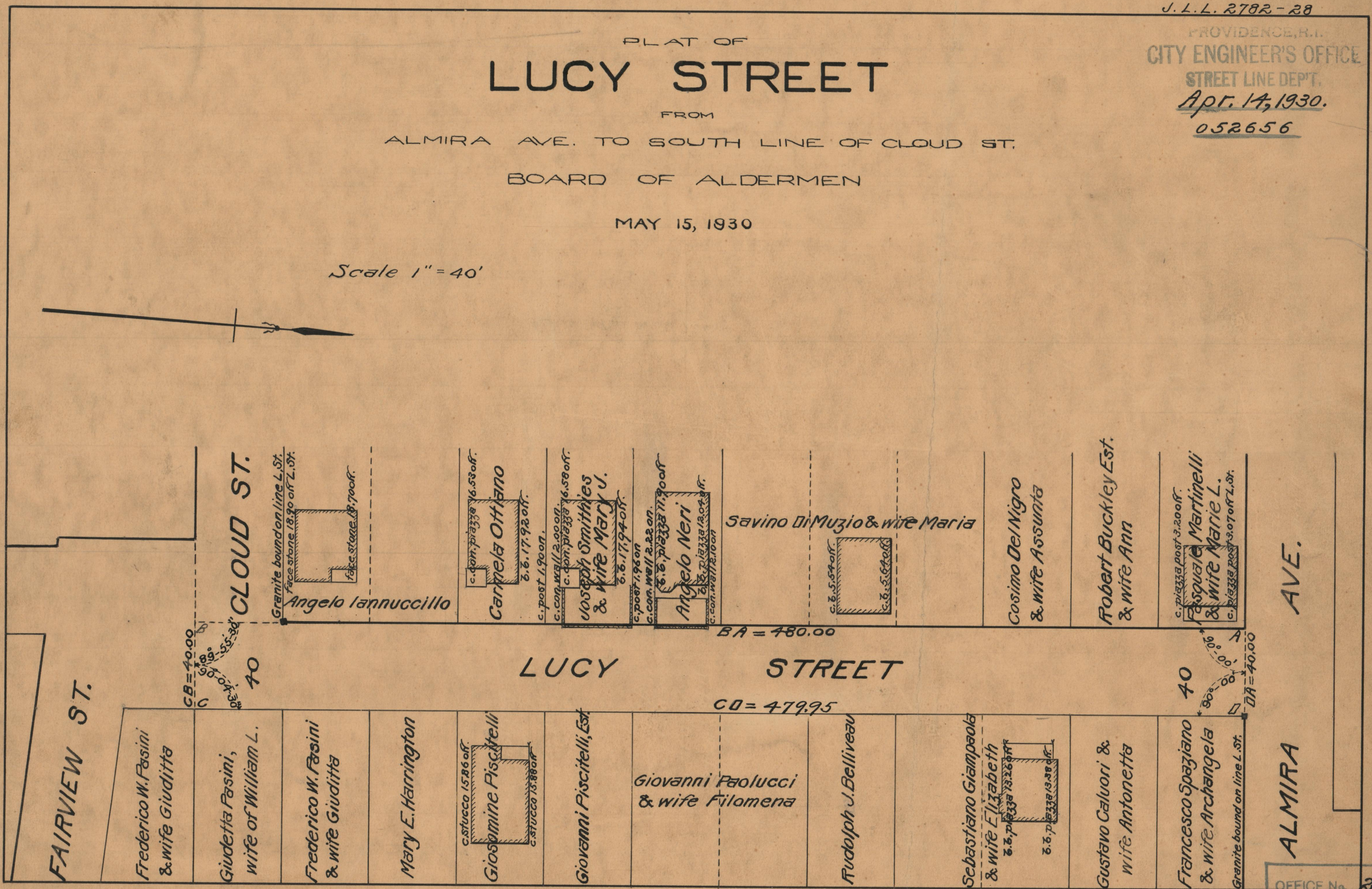
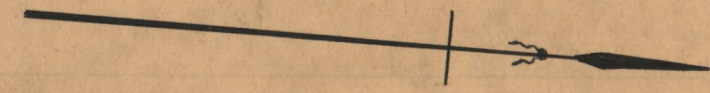
PLAT OF
LUCY STREET

FROM
ALMIRA AVE. TO SOUTH LINE OF CLOUD ST.

BOARD OF ALDERMEN

MAY 15, 1930

Scale 1" = 40'



FAIRVIEW ST.

CLOUD ST.

LUCY STREET

ALMIRA AVE.

OFFICE No.	25033
DRAWER	86
SHEET	A-98