

# PLAT OF RUTHERGLEN AVENUE

FROM  
NARRAGANSETT AVE. TO ALEXANDER ST.

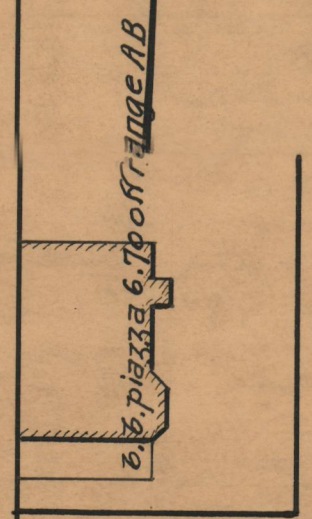
IN TWO SHEETS

BOARD OF ALDERMEN

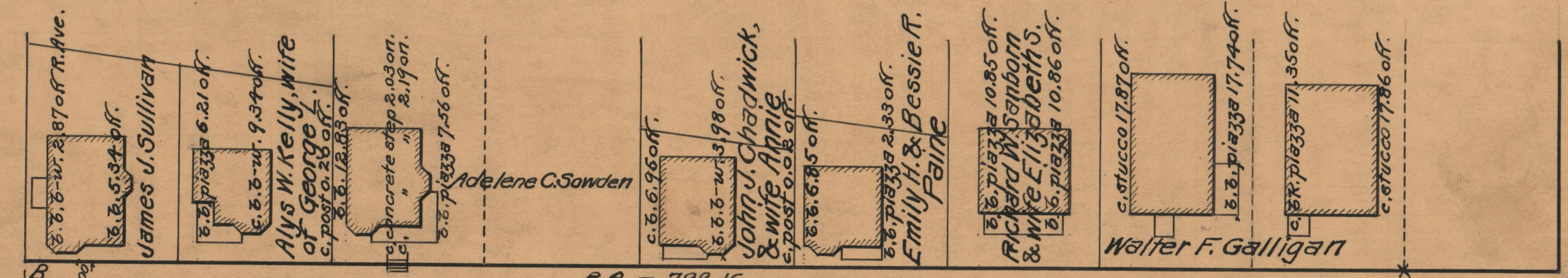
APRIL 17, 1930.

PROVIDENCE, R.I.  
CITY ENGINEER'S OFFICE  
STREET LINE DEPT.  
Mar. 6, 1930.  
052560

Scale 1" = 40'

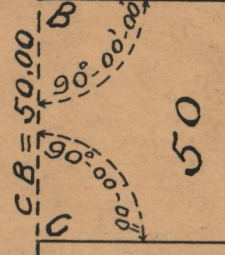


ALEXANDER ST.



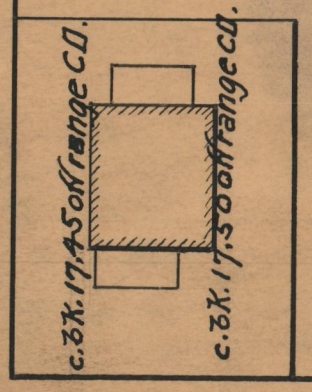
BA = 799.16

## RUTHERGLEN AVENUE

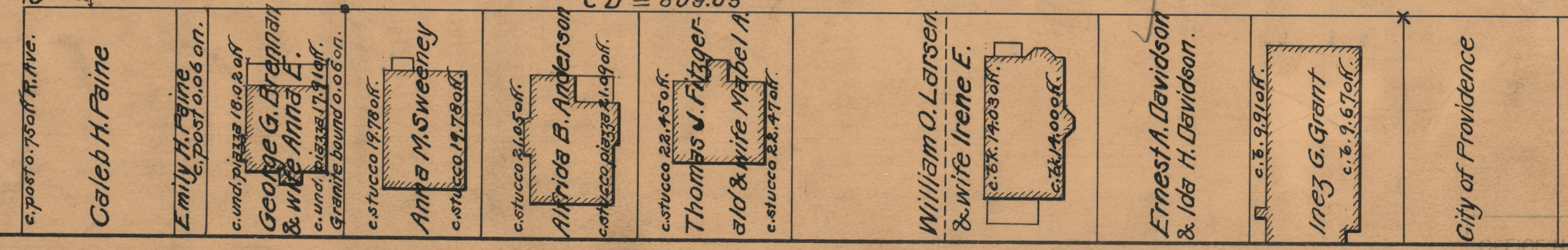


50

CD = 809.05



ALEXANDER



City of Providence

OFFICE NO. 25019  
DRAWER " 86  
SHEET " A-95