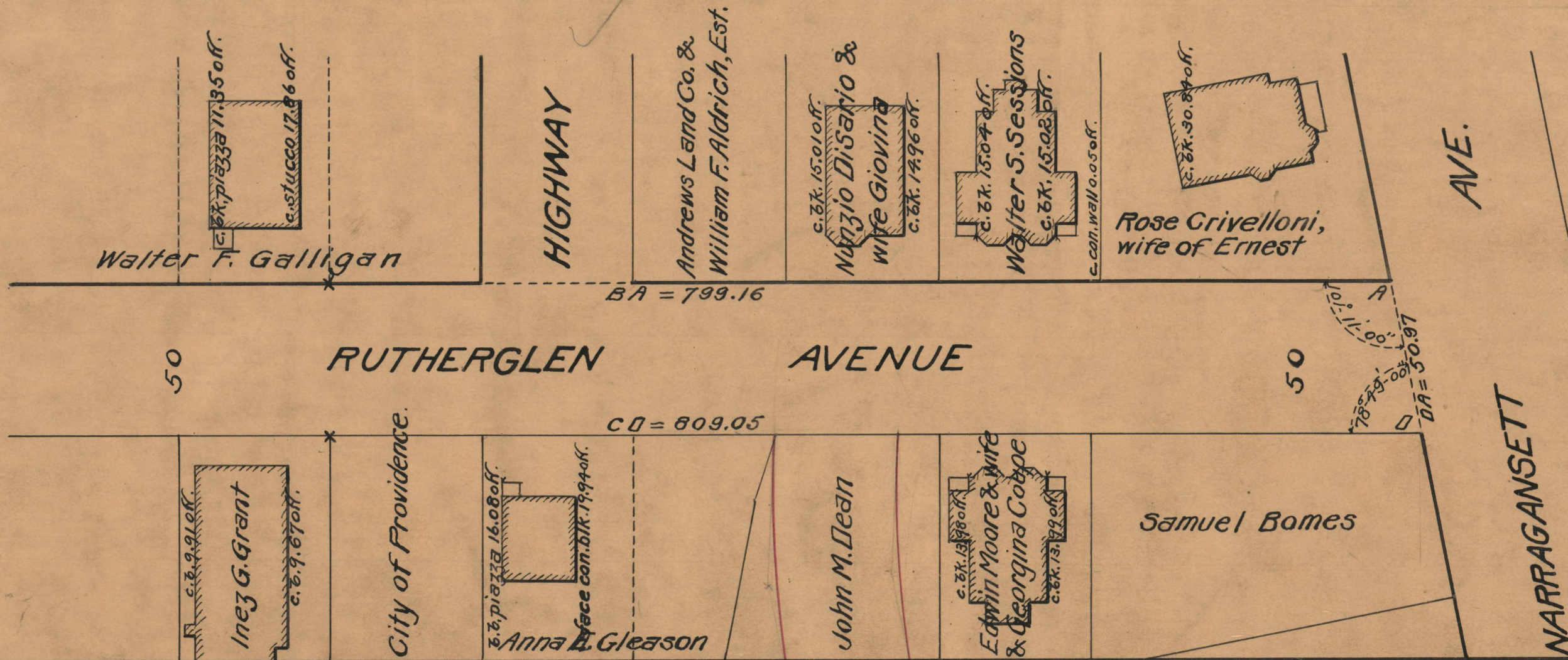


PLAT OF
RUTHERGLEN AVENUE
 FROM
 NARRAGANSETT AVE. TO ALEXANDER ST.
 IN TWO SHEETS
 BOARD OF ALDERMEN

PROVIDENCE, R.I.
 CITY ENGINEER'S OFFICE
 STREET LINE DEPT.
 Mar. 6, 1930.
 052559

APRIL 17, 1930.

Scale = 1" = 40'



OFFICE No. 35018
 DRAWER 86
 SHEET A-9A