

PLAT OF MOUNT PLEASANT AVENUE

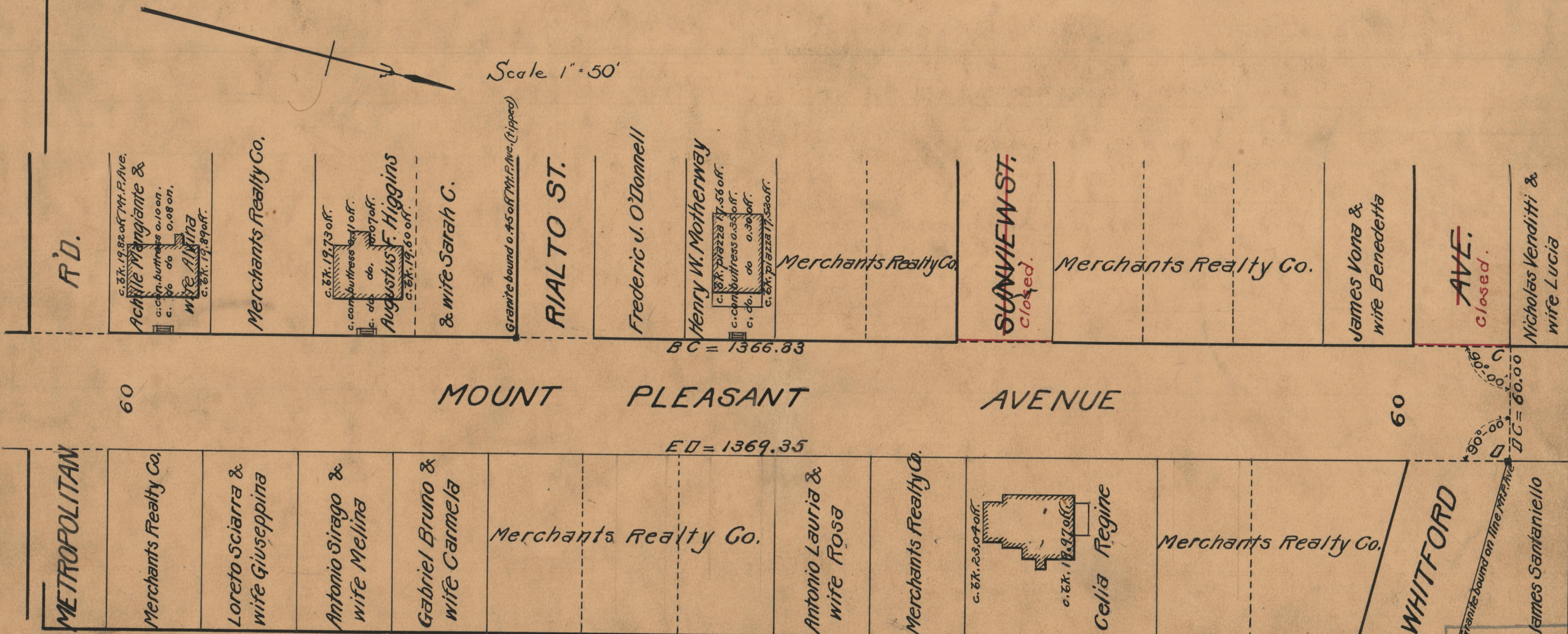
FROM
CHALKSTONE AVE. TO NORTHERLY LINE OF WHITFORD AVE.

IN THREE SHEETS
BOARD OF ALDERMEN
DECEMBER 19, 1929

PROVIDENCE, R.I.
CITY ENGINEER'S OFFICE
STREET LINE DEPT.
Feb. 5, 1930.

052483

Scale 1" = 50'



BC = 1366.83

MOUNT PLEASANT AVENUE

ED = 1369.35

OFFICE No. 25004
 DRAWER 86
 SHEET A-89