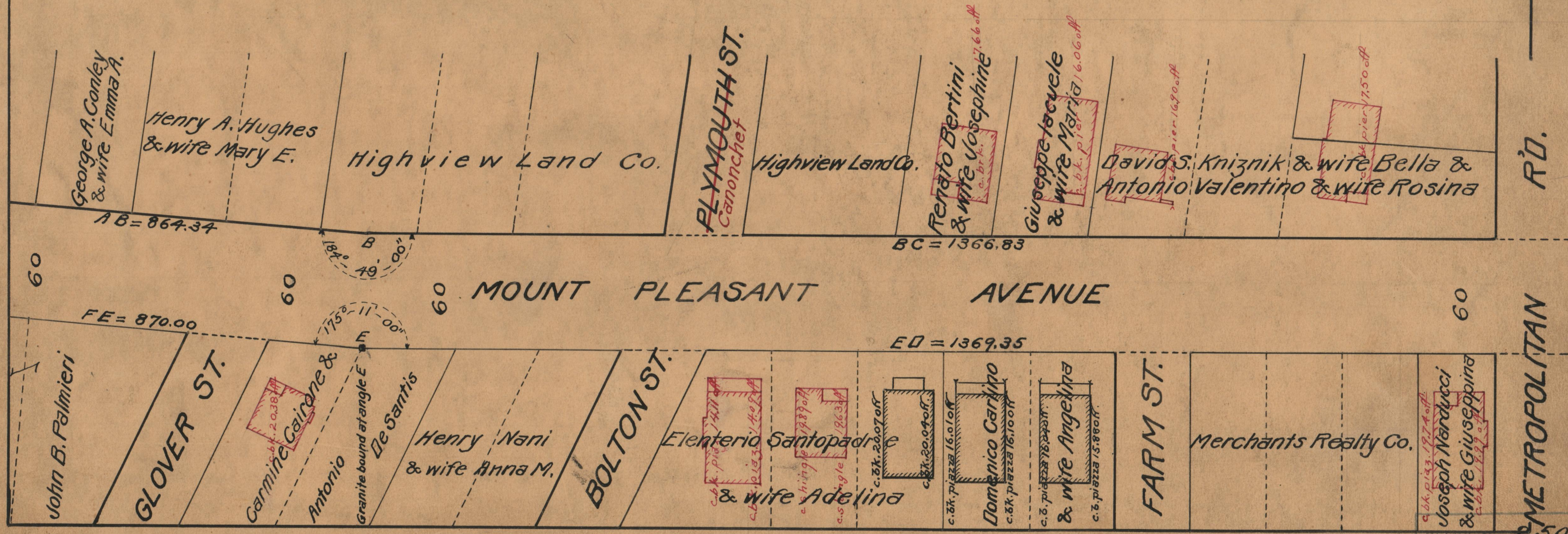
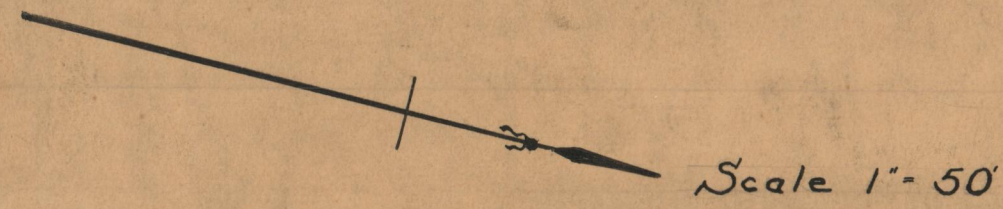


PLAT OF MOUNT PLEASANT AVENUE

FROM
CHALKSTONE AVE. TO NORTHERLY LINE OF WHITFORD AVE.
IN THREE SHEETS
BOARD OF ALDERMEN
DECEMBER 19 1929

PROVIDENCE, R.I.
CITY ENGINEER'S OFFICE
STREET LINE DEPT.
Feb. 5, 1930.
052782



OFFICE No. 85003
DRAWER 86
SHEET A-88