

PLAT OF MOUNT PLEASANT AVENUE

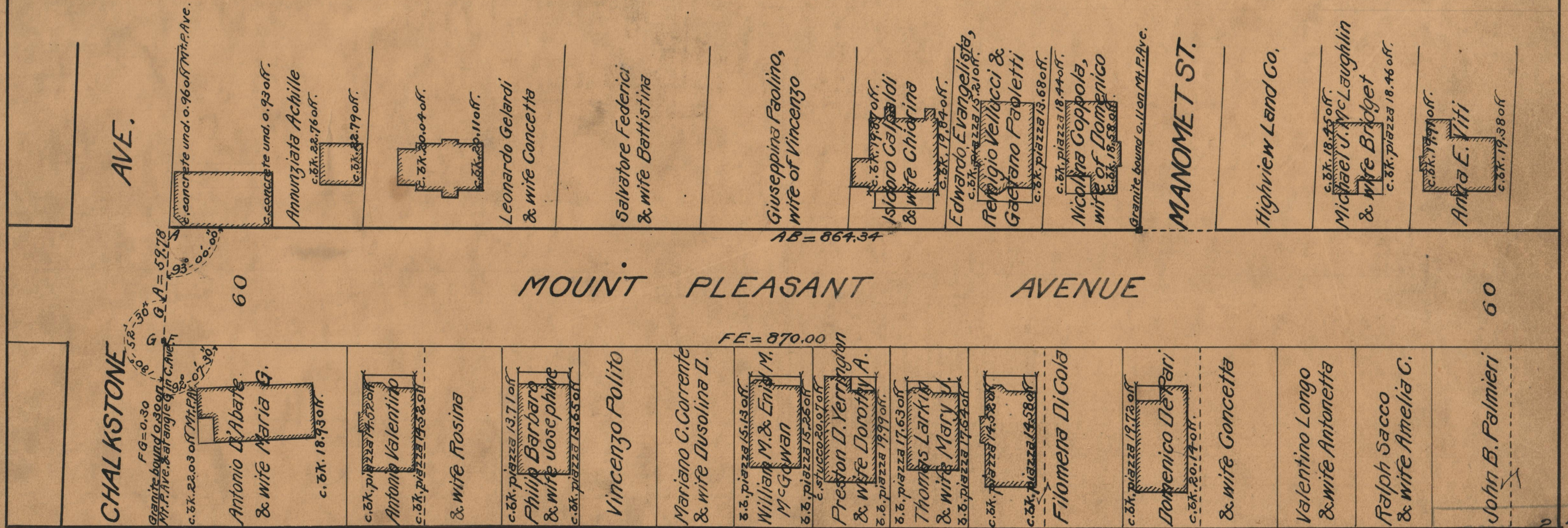
FROM
CHALKSTONE AVE TO NORTHERLY LINE OF WHITEFORD AVE

IN THREE SHEETS
BOARD OF ALDERMEN

DECEMBER 19, 1929

CITY ENGINEER'S OFFICE
STREET LINE DEPT.
Feb. 5, 1930.
052481

Scale 1" = 50'



OFFICE NO. 25002
DRAWER 86
SHEET A-87