

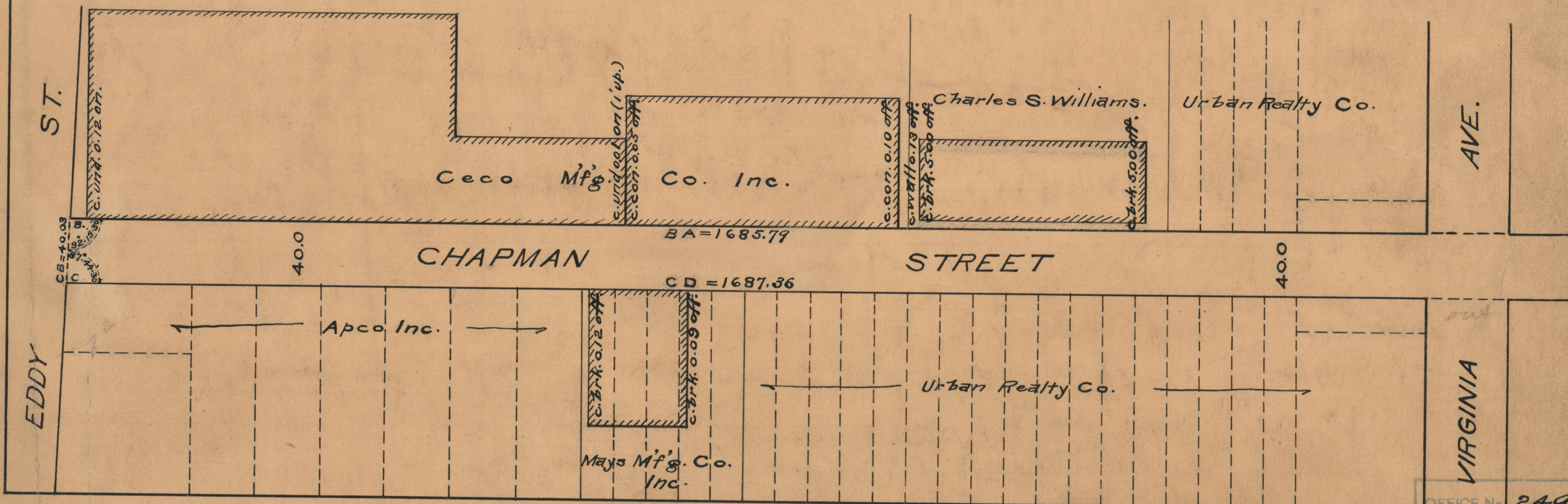
PLAT OF CHAPMAN STREET

FROM
ALLENS AVE. TO EDDY ST.
BOARD OF ALDERMEN
OCTOBER 17, 1929.

PROVIDENCE, R.I.
CITY ENGINEER'S OFFICE
STREET LINE DEPT.
JAN. 16, 1930.
052434



SCALE 1" = 60'



OFFICE No.	24988
DRAWER	86
SHEET	A-81