

PLAT OF CHAPMAN STREET

FROM
ALLENS AVE. TO EDDY ST.
BOARD OF ALDERMEN
OCTOBER 17, 1929.

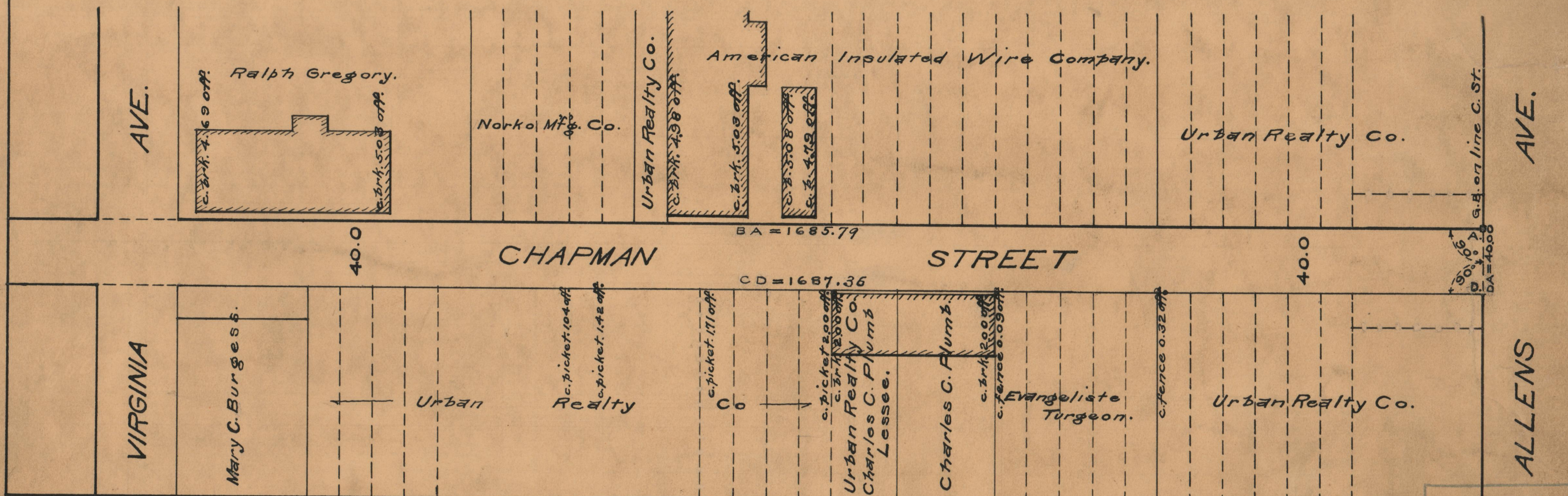
PROVIDENCE, R.I.
CITY ENGINEER'S OFFICE

STREET LINE DEPT.
Jan. 16, 1930.

052433



SCALE 1" = 60'



OFFICE No. 34987
 DRAWER " 86
 SHEET " A-80