

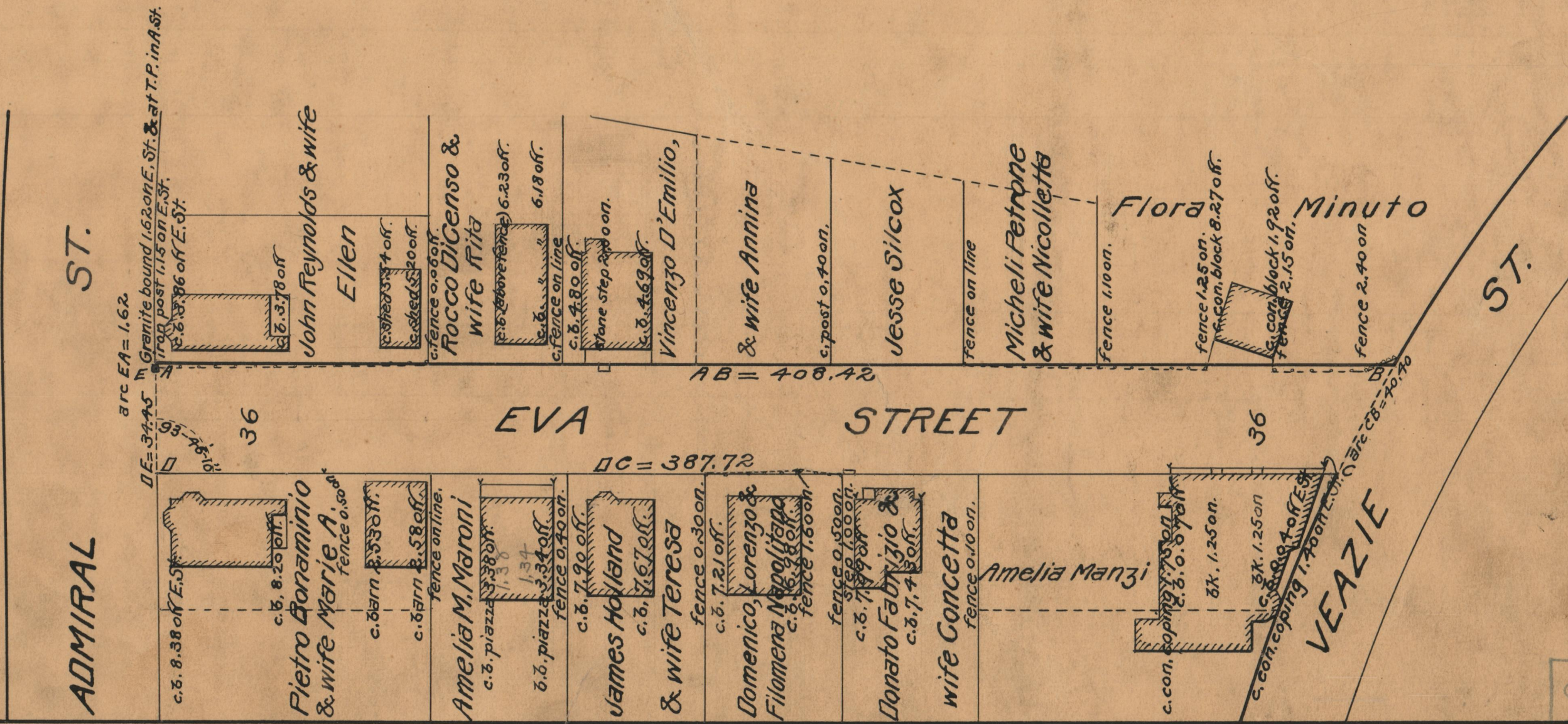
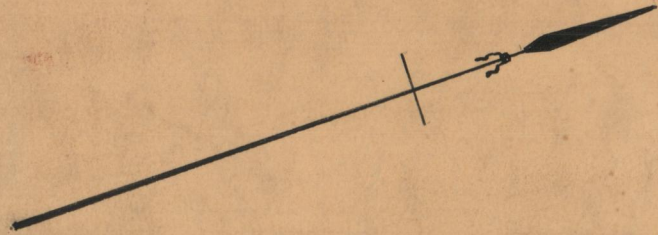
PROVIDENCE, R.I.
CITY ENGINEER'S OFFICE

STREET LINE DEPT
Dec. 28, 1929.

052357

PLAT OF
EVA STREET
FROM
ADMIRAL ST. TO VEAZIE ST.
BOARD OF ALDERMEN
DECEMBER 19, 1929.

Scale 1"=40'



OFFICE No. 24933
DRAWN 86
SHEET A-76