

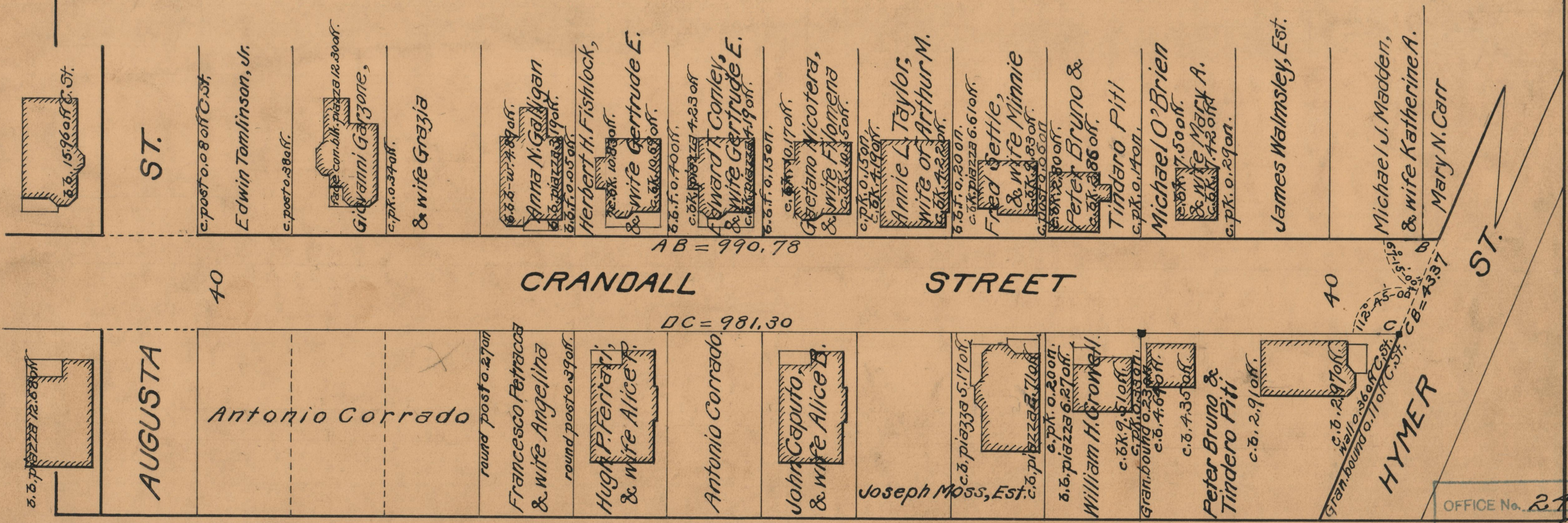
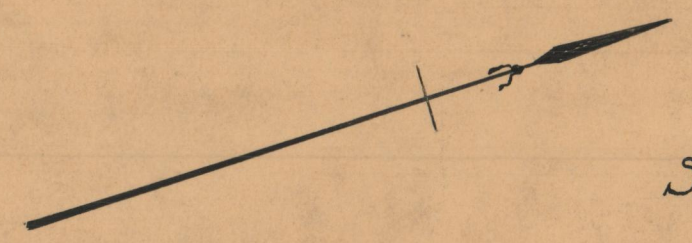
PLAT OF  
**CRANDALL STREET**

FROM  
ADMIRAL ST. TO HYMER ST.

IN TWO SHEETS  
BOARD OF ALDERMEN

DECEMBER 19, 1929.

Scale 1"=40'



ST.

c. post o. 0.8 off C. St.

Edwin Tomlinson, Jr.

c. post o. 38 off.



Giovanni Garzone,

c. pk. o. 34 off.

& wife Grazia



Anna N. Galigan

c. b. piazza 19 off.

Herbert H. Fishlock,

c. bk. 10.83 off.

& wife Gertrude E.

c. bk. 19.83 off.

c. b. f. o. 700 ft.

Edward K. Conley,

& wife Gertrude E.

c. bk. 14.19 off.

c. b. f. o. 150 ft.

Gertrude Micotera,

& wife Flomena

c. bk. 14.19 off.

c. pk. o. 150 ft.

Annie L. Taylor,

wife of Arthur M.

c. bk. 4.19 off.

Fred Settle,

& wife Minnie

c. bk. 8.83 off.

c. bk. 8.83 off.

Peter Bruno &

Tindaro Piti

c. pk. o. 14 on.

Michael O'Brien

c. bk. 7.50 off.

& wife Mary A.

c. bk. 7.43 off.

c. pk. o. 29 on.

James Walmsley, Est.

Michael J. Madden,

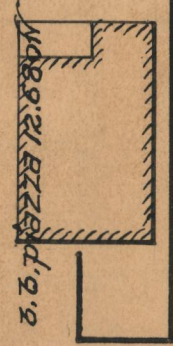
& wife Katherine A.

Mary N. Carr

40

CRANDALL STREET

40



AUGUSTA

Antonio Corrado

round post o. 27 on

Francesco Petracca  
& wife Angelina

round post o. 39 off.



Hugh P. Ferreri,  
& wife Alice P.

Antonio Corrado



John Caputo,  
& wife Alice B.

Joseph Moss, Est.

c. b. piazza 5.17 off.



William H. Crowell.

c. pk. o. 20 on.

c. b. piazza 6.27 off.

c. bk. 9.51 off.

Gran. bound o. 23 on.

c. b. 4.64 on.

c. b. 4.35 off.

Peter Bruno &

Tindaro Piti

c. b. 2.91 off.

c. b. 2.97 on.

Gran. bound o. 17 off C. St.

HYMER

ST.

OFFICE No. 27932  
DRAWER " 86  
SHEET " A-75