

PLAT OF BABCOCK STREET

FROM
CACTUS ST. TO ROGER WILLIAMS PARK

IN TWO SHEETS.

BOARD OF ALDERMEN

FEBRUARY 20, 1930

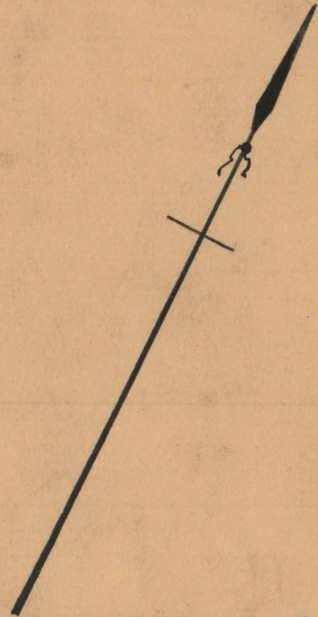
PROVIDENCE, R.I.
CITY ENGINEER'S OFFICE

STREET LINE DEPT.

Dec. 6, 1929.

052333

Scale 1" = 40'

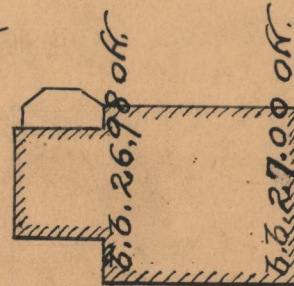
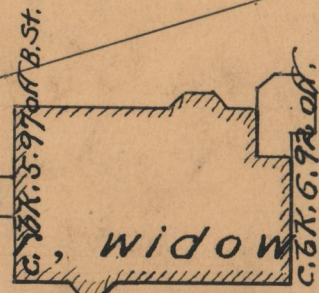


ROGER WILLIAMS PARK

Gran. bound at angle in Park Line

VERNDALE AVE.

Lizzie A. Drape, widow of William H.

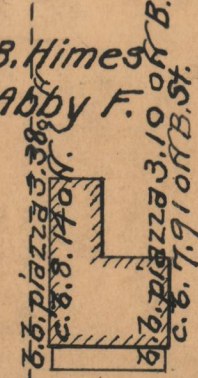


face iron post 0.42 off.
Gran. bound 0.10 off.

Lloyd R. Lord &
wife Gertrude M.

Gran. bound 0.01 on.
face iron post 0.11 off.
c. post 0.03 on.

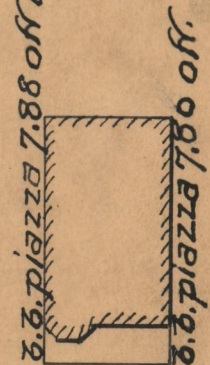
Charles B. Himes
& wife Abby F.



c. post 0.17 off B. St.

ST.

s.b. piazza 7.88 off B. St.



CB = 40.10
face iron post 0.09 on B. St.
91° 00'
90° 00'
40.10

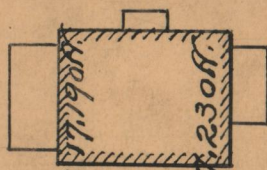
BA = 975.96

BABCOCK STREET

CD = 834.64

40.10

Lizzie A. Drape, widow of William H.
face iron post 0.25 off.
c. b.k. 17.23 off.
face iron post 0.07 off.
face iron post 0.15 on.

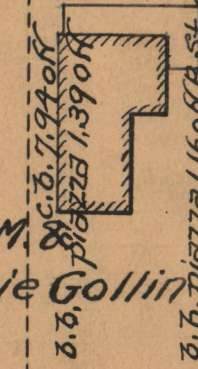


c. stucco und. 1.49 off.
Arthur R. Clark &
wife Anna L.
c. stucco und. 1.50 on.

Gran. bound 0.01 off.
c. b.k. 0.66 off.
c. b.k. 0.41 on.

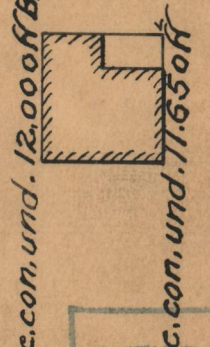
Ebba A. Ekman
Gran. bound 0.86 on

Thomas M. &
Annie Gollin



HANCOCK

c. con. und. 12.00 off B. St.



OFFICE No. 24930
DRAWER 86
SHEET A-73