

SHEET ONE

G.W.S. 2690-153-4

PLAT OF BABCOCK STREET

PROVIDENCE, R.I.
CITY ENGINEER'S OFFICE
STREET LINE DEPT.
Dec. 6, 1929,
052332

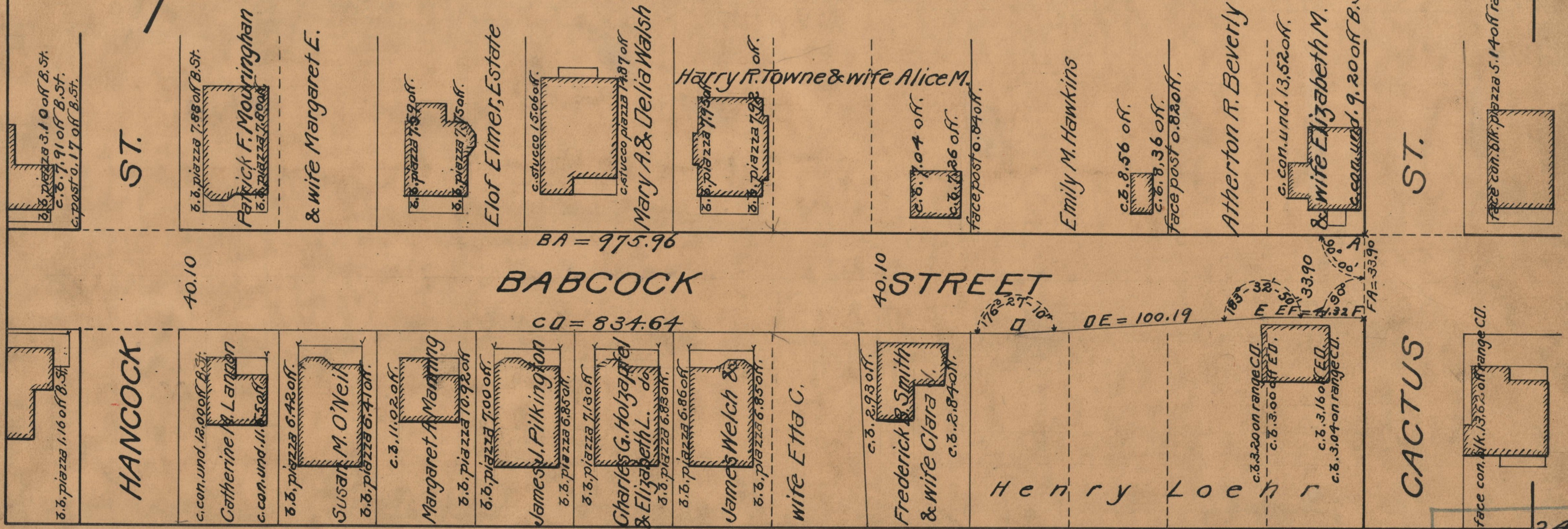
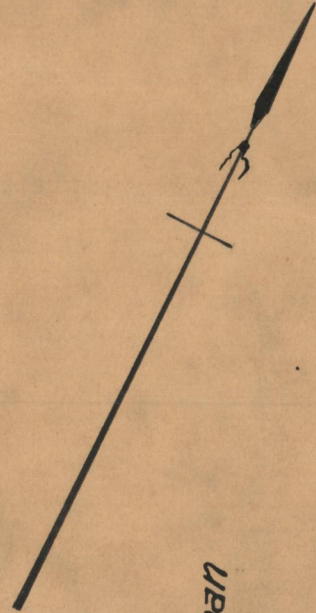
FROM
CACTUS ST. TO ROGER WILLIAMS PARK

IN TWO SHEETS

BOARD OF ALDERMEN

FEBRUARY 20, 1930

Scale 1" = 40'



HANCOCK ST.

40.10

BABCOCK STREET

40.10

BABCOCK STREET

CACTUS ST.

CACTUS ST.

BA = 975.96

CD = 834.64

DE = 100.19

EA = 33.90

FA = 33.90

OFFICE No. 24929
DRAWER " 86
SHEET " A-7B