

PLAT OF SEAMANS STREET

FROM ADMIRAL ST. TO DOUGLAS AVE.

IN TWO SHEETS
BOARD OF ALDERMEN

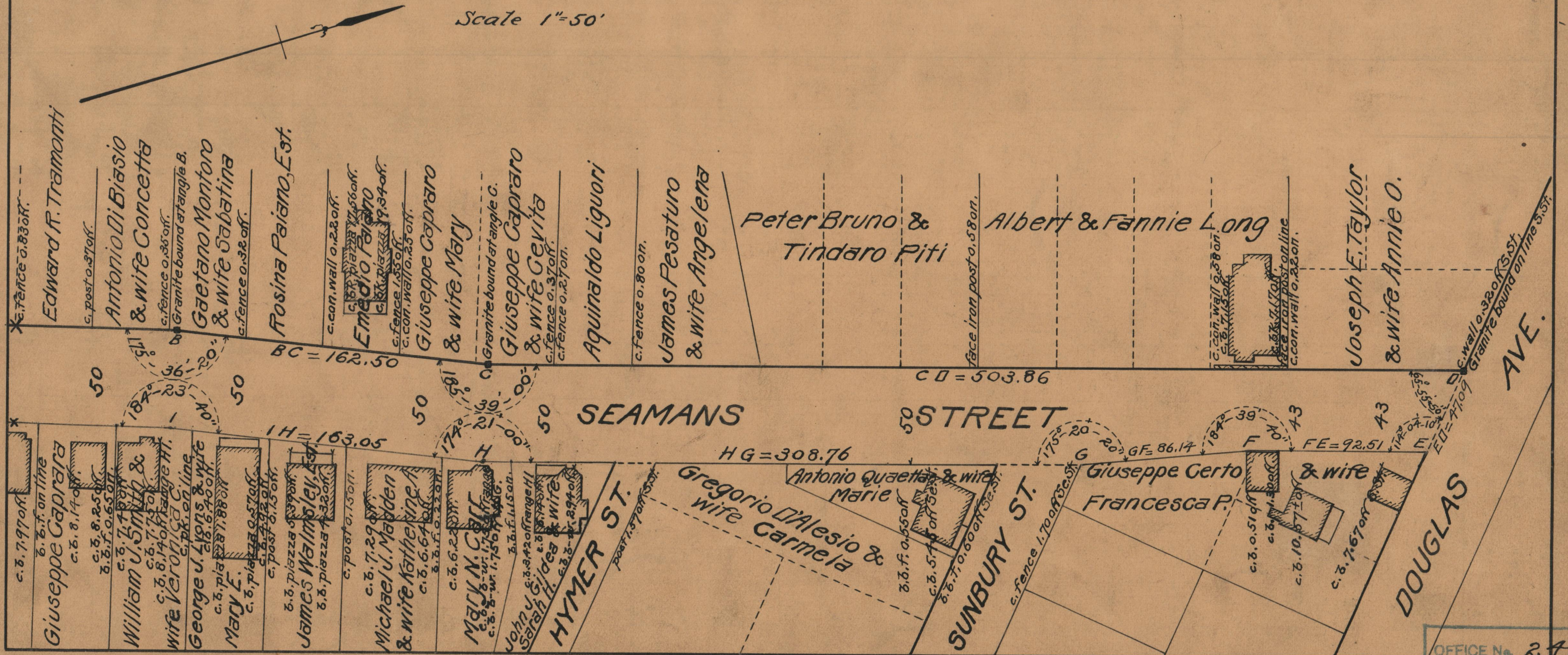
JANUARY 16, 1930

CITY ENGINEER'S OFFICE

STREET LINE DEPT.
Nov. 22, 1929.

052281

Scale 1"=50'



OFFICE No. 24928
 DRAWER " 86
 SHEET " A-71