

PLAT OF SEAMANS STREET

FROM ADMIRAL ST. TO DOUGLAS AVE.

IN TWO SHEETS
BOARD OF ALDERMEN

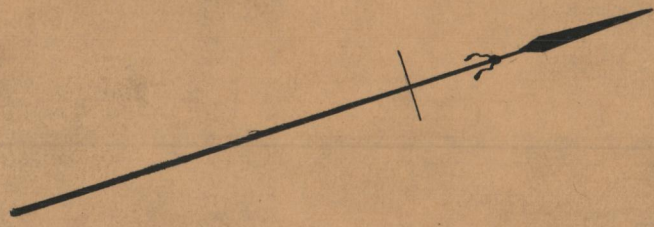
JANUARY 16, 1930

PROVIDENCE, R.I.
CITY ENGINEER'S OFFICE

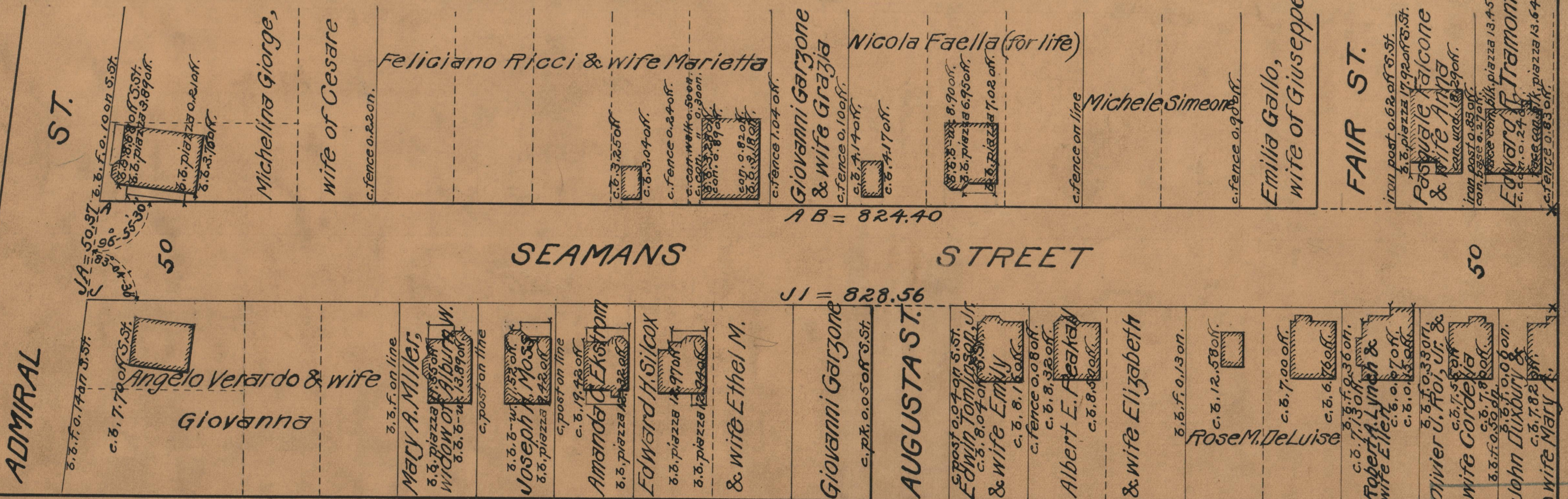
STREET LINE DEPT.

Nov. 22, 1929.

052280



Scale 1" = 50'



AB = 824.40

JI = 828.56

OFFICE NO. 24927
 DRAWER " 86
 SHEET " A-70