

Nov. 21, 1929

J. L. L. 2742-55

PLAT OF SEVENTH STREET

FROM WEST LINE OF SUMMIT AVE. EASTERLY

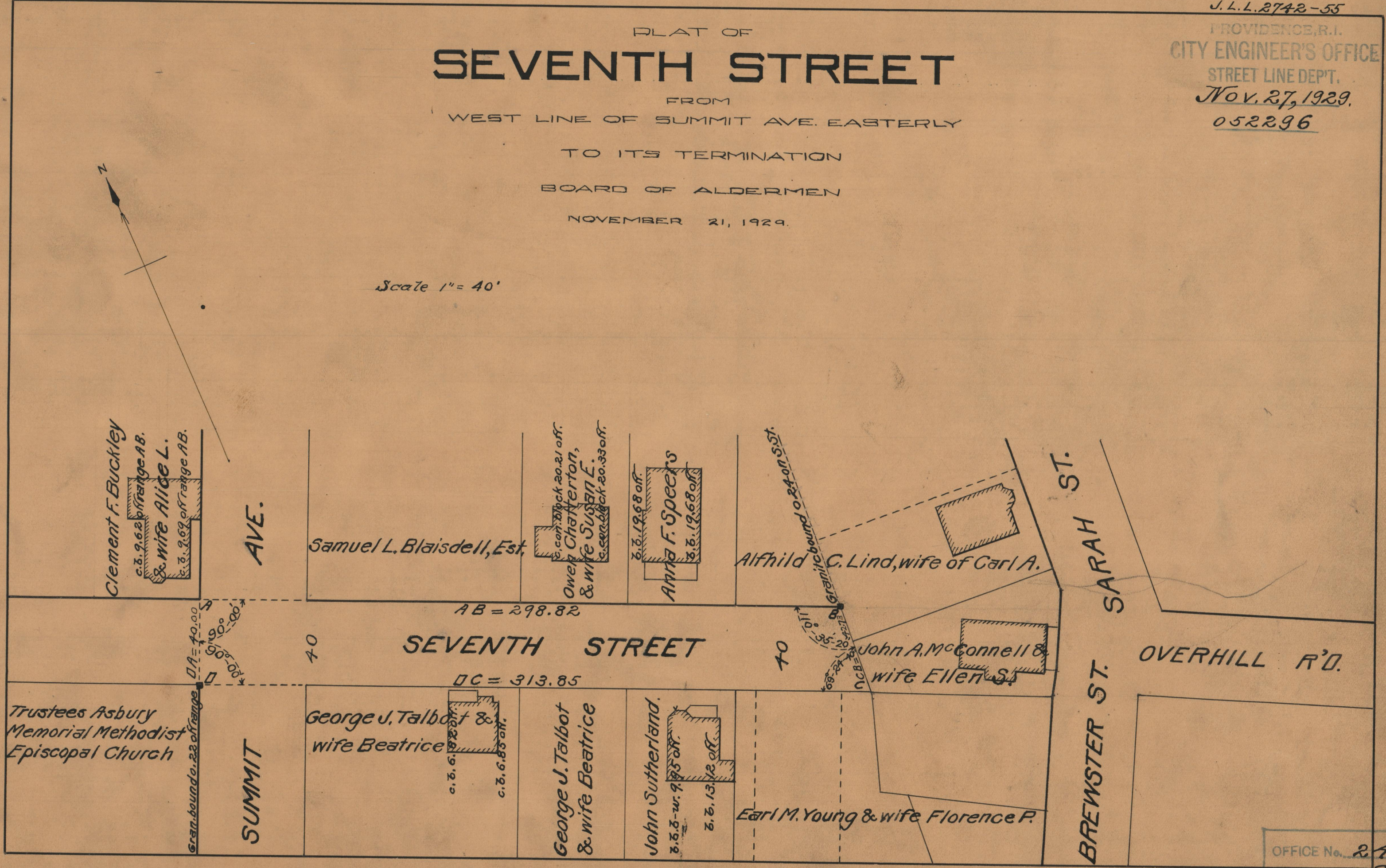
TO ITS TERMINATION

BOARD OF ALDERMEN

NOVEMBER 21, 1929.

PROVIDENCE, R.I.
CITY ENGINEER'S OFFICE
STREET LINE DEPT.
Nov. 27, 1929.
052296

Scale 1" = 40'



Clement F. Buckley
& wife Alice L.
c.b. 9.6.22 off range A.B.
c.b. 9.6.22 off range A.B.

AVE.

Samuel L. Blaisdell, Est.

Owen Chanterton,
& wife Susan E.
c. con. back 20.21 off.
c. con. back 20.33 off.

Anna F. Speers
d.b. 19.68 off.
d.b. 19.68 off.

Alfhild C. Lind, wife of Carl A.
Granite bound 0.24 on S. St.

ST.
SARAH

AB = 298.82

SEVENTH STREET

DC = 313.85

John A. McConnell &
wife Ellen S.

OVERHILL R'D.

Trustees Asbury
Memorial Methodist
Episcopal Church

SUMMIT

George J. Talbot &
wife Beatrice
c.b. 6.8.80 off.
c.b. 6.8.80 off.

George J. Talbot
& wife Beatrice

John Sutherland.
d.b. 8-w. 9.43 off.
d.b. 13.12 off.

Earl M. Young & wife Florence P.

BREWSTER ST.

OFFICE No. 24900
DRAWER " 86
SHEET " A-69