

PROVIDENCE, R.I.
CITY ENGINEER'S OFFICE
STREET LINE DEPT.
Nov. 27, 1929,
052295

PLAT OF
PAUL STREET

FROM
CHARLES ST. 250 FEET EASTERLY

BOARD OF ALDERMEN

OCTOBER 21, 1929

FROM WINDMILL ST. WESTERLY TO THE POINT ALREADY RECEIVED

MARCH 17, 1932.

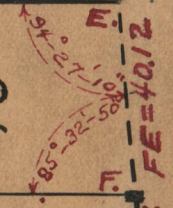
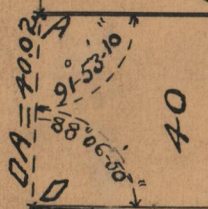
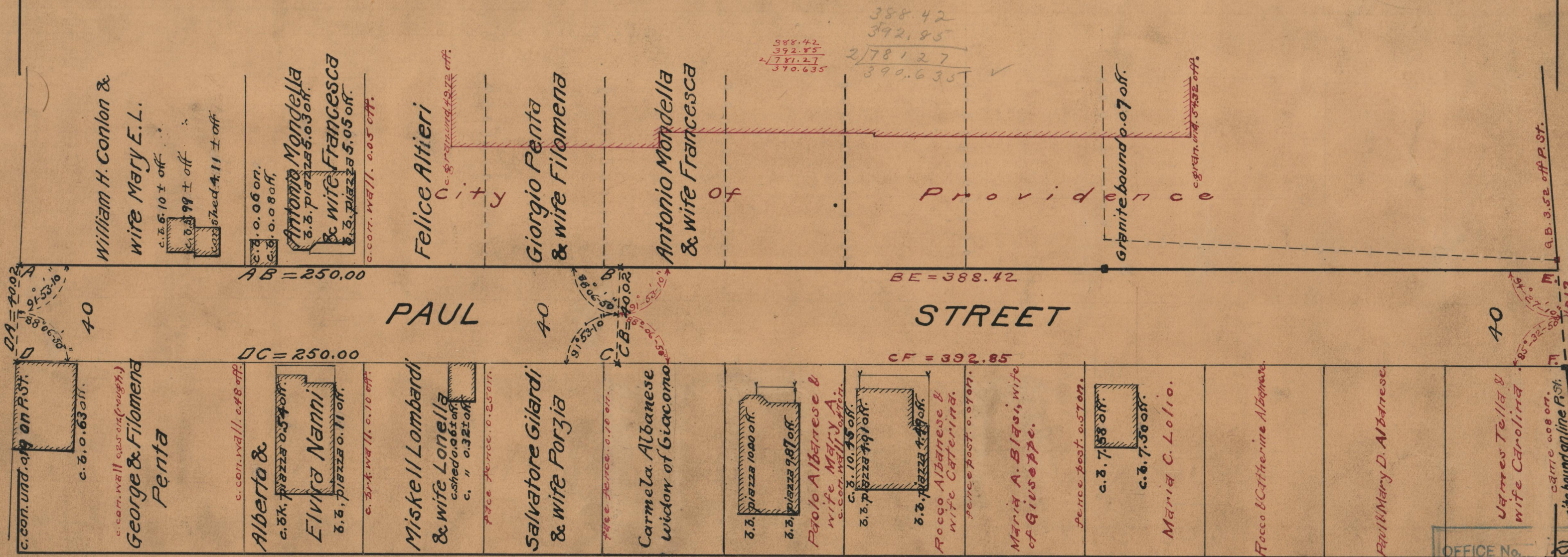
Scale 1" = 40'

NOTE:-
Red Notes Added March 17, 1932.



CHARLES ST.

WINDMILL ST.



OFFICE No. 24899
DRAWER 86
SHEET A-68