

PLAT OF HAZAE L STREET

FROM
ADMIRAL ST. TO GENERAL ST.

IN TWO SHEETS

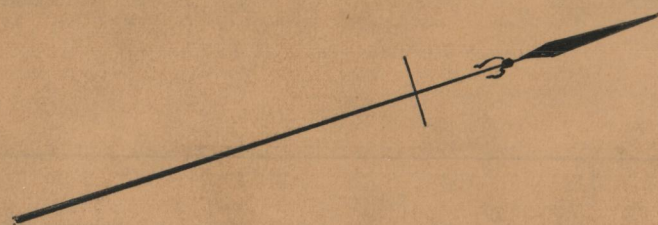
BOARD OF ALDERMEN

NOVEMBER 12, 1929.

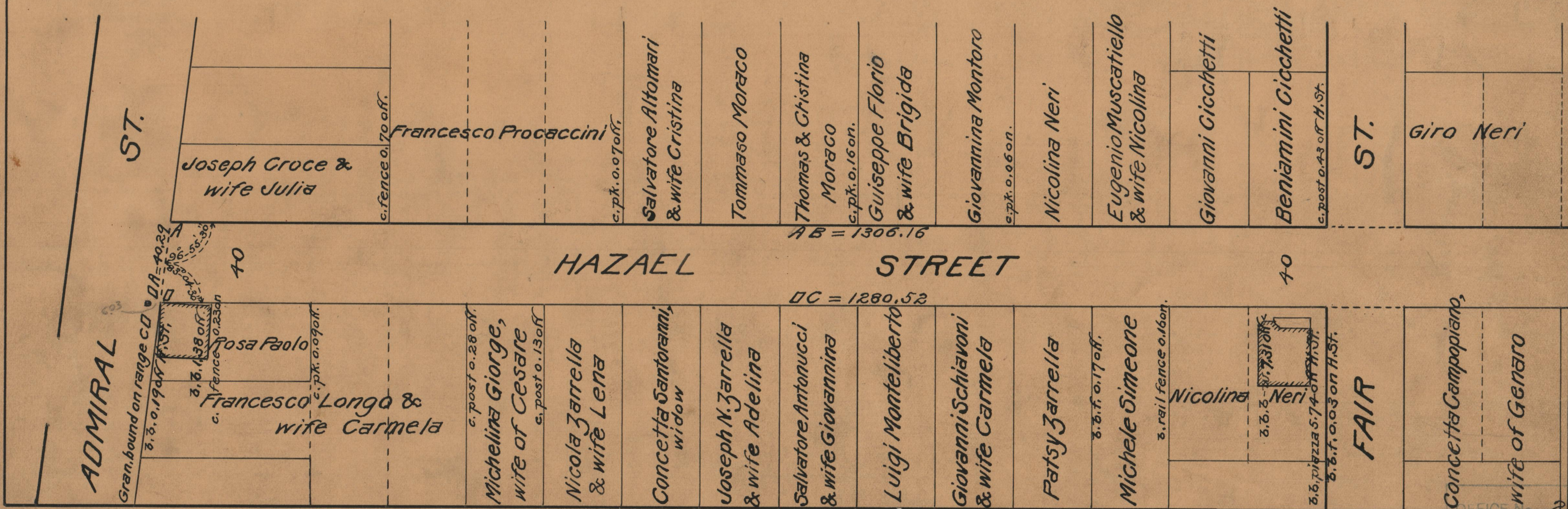
PROVIDENCE, R.I.
CITY ENGINEER'S OFFICE

STREET LINE DEPT.
Nov. 27, 1929.

052290



Scale 1" = 50'



OFFICE NO. 24894
 DRAWER " 86
 SHEET " A-63