

PLAT OF GARFIELD AVENUE

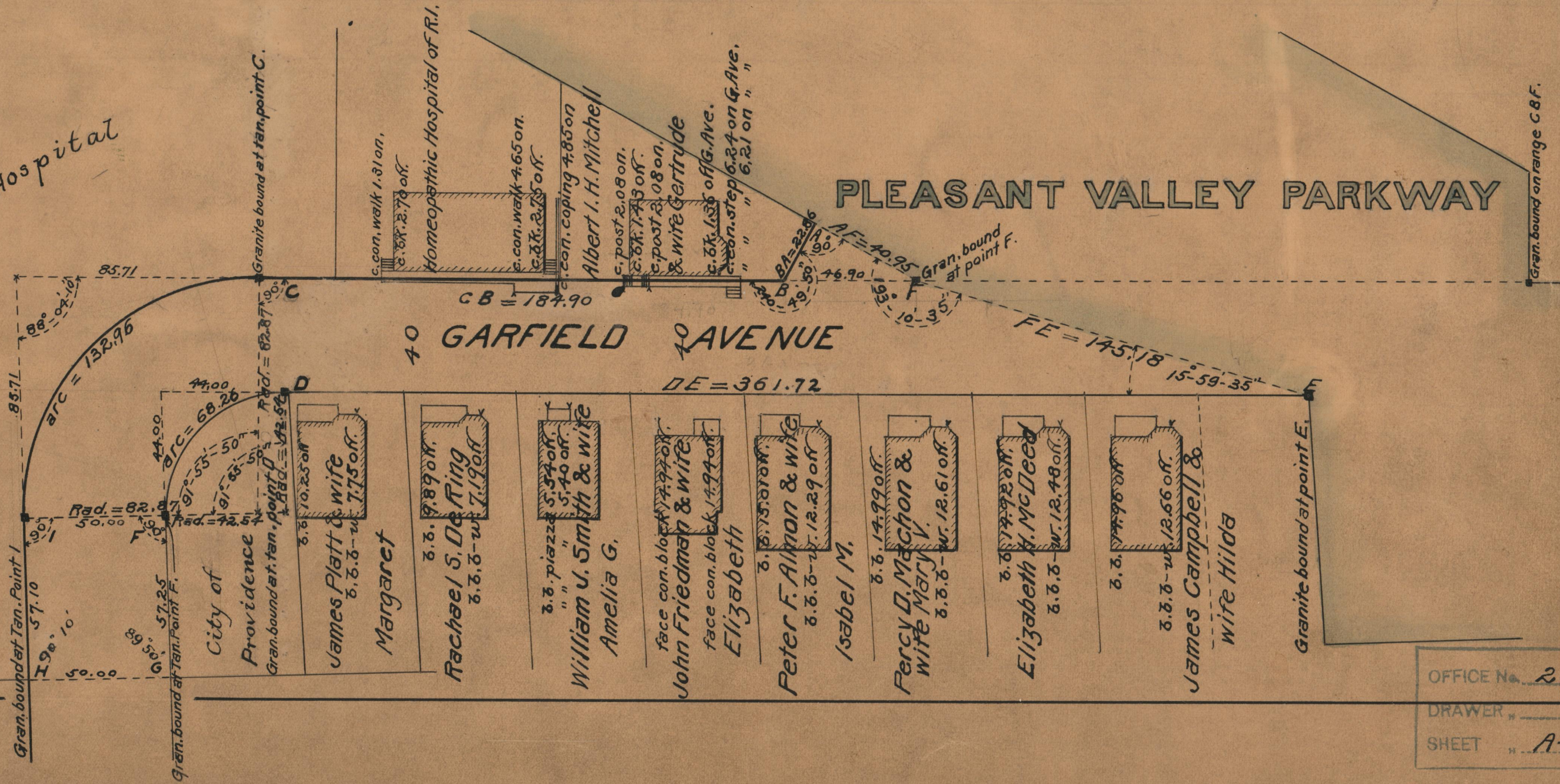
FROM
PLEASANT VALLEY PK'Y. TO PORTION ALREADY RECEIVED
BOARD OF ALDERMEN
OCTOBER 17, 1929

Scale 1" = 40'



Providence
Lying-in Hospital

Providence



OFFICE No. 24853
DRAWER " 86
SHEET " A-59