

J.L.L. 2707-129

PROVIDENCE, R.I.
CITY ENGINEER'S OFFICE

STREET LINE DEPT.

Aug. 12, 1929.

052061

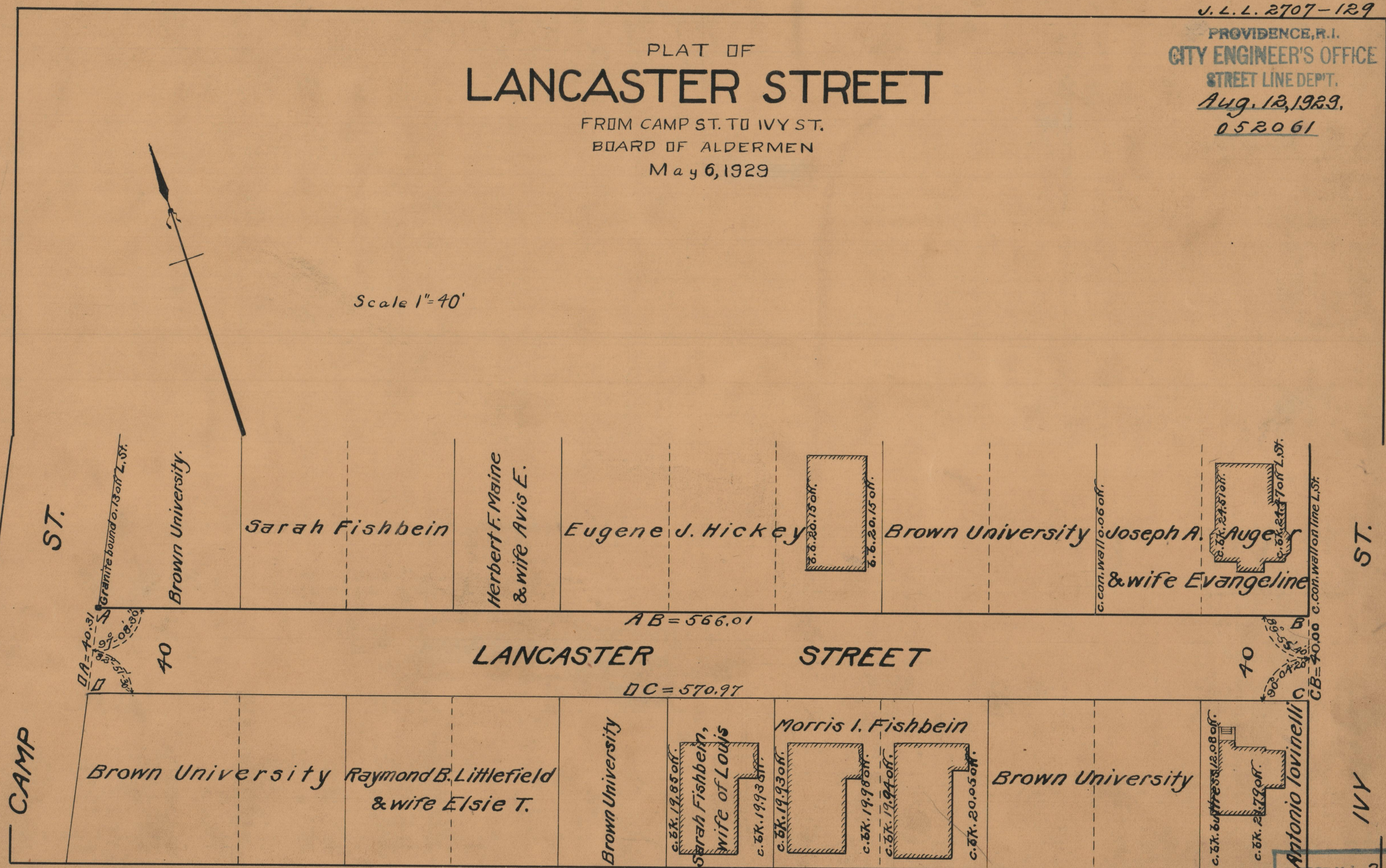
PLAT OF LANCASTER STREET

FROM CAMP ST. TO IVY ST.

BOARD OF ALDERMEN

May 6, 1929

Scale 1"=40'



OFFICE NO. 24811
DRAWER 86
SHEET A-54