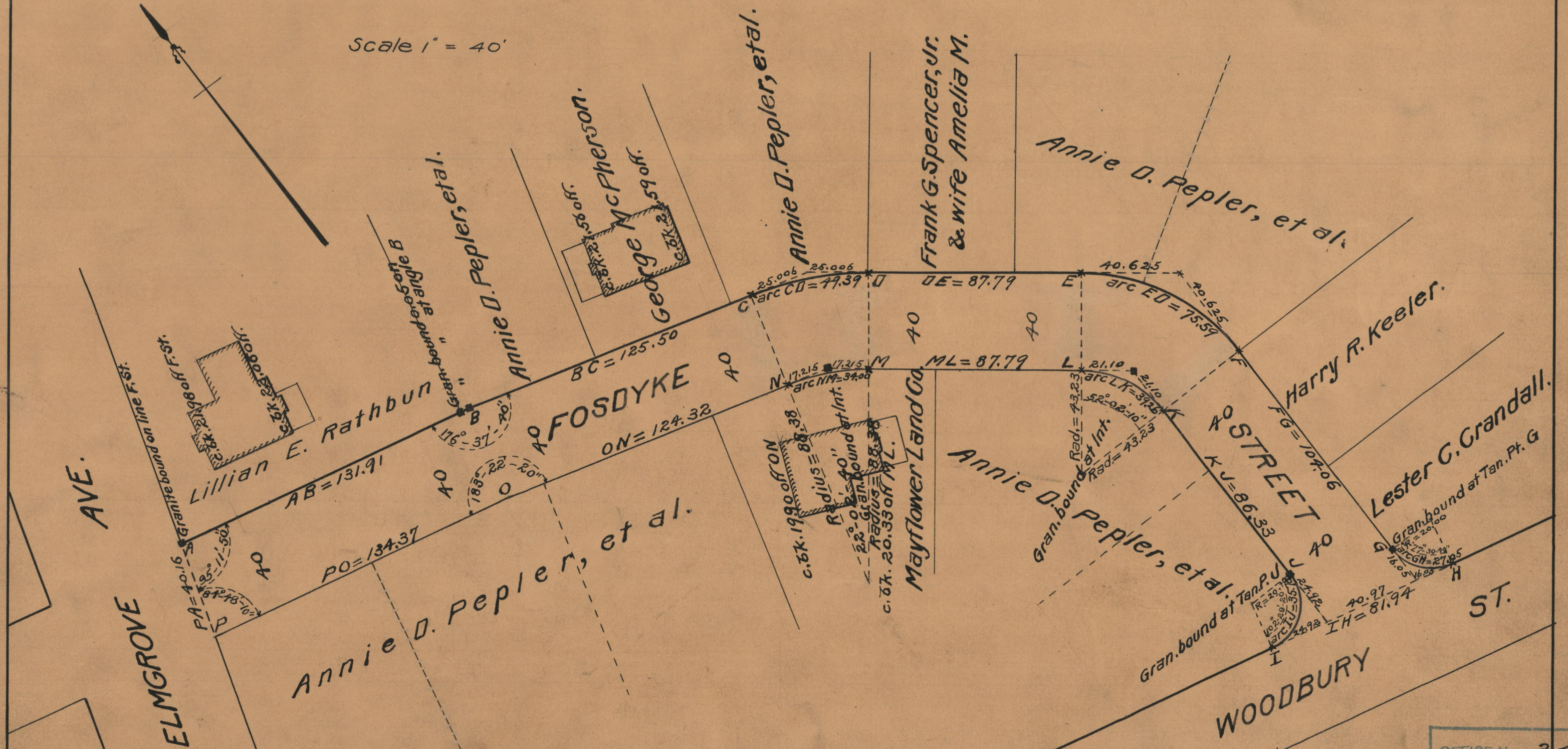


PLAT OF FOSDYKE STREET

FROM
ELMGROVE AVE. TO WOODBURY ST.
BOARD OF ALDERMEN
MAY 6, 1929

Scale 1" = 40'



| | |
|------------|-------|
| OFFICE No. | 24803 |
| DRAWER | 86 |
| SHEET | A-52 |