

J.L.L. 2707-115

PROVIDENCE, R.I.
CITY ENGINEER'S OFFICE

STREET LINE DEPT.

July 27, 1929.

052014

PLAT OF

LOTUS PLACE

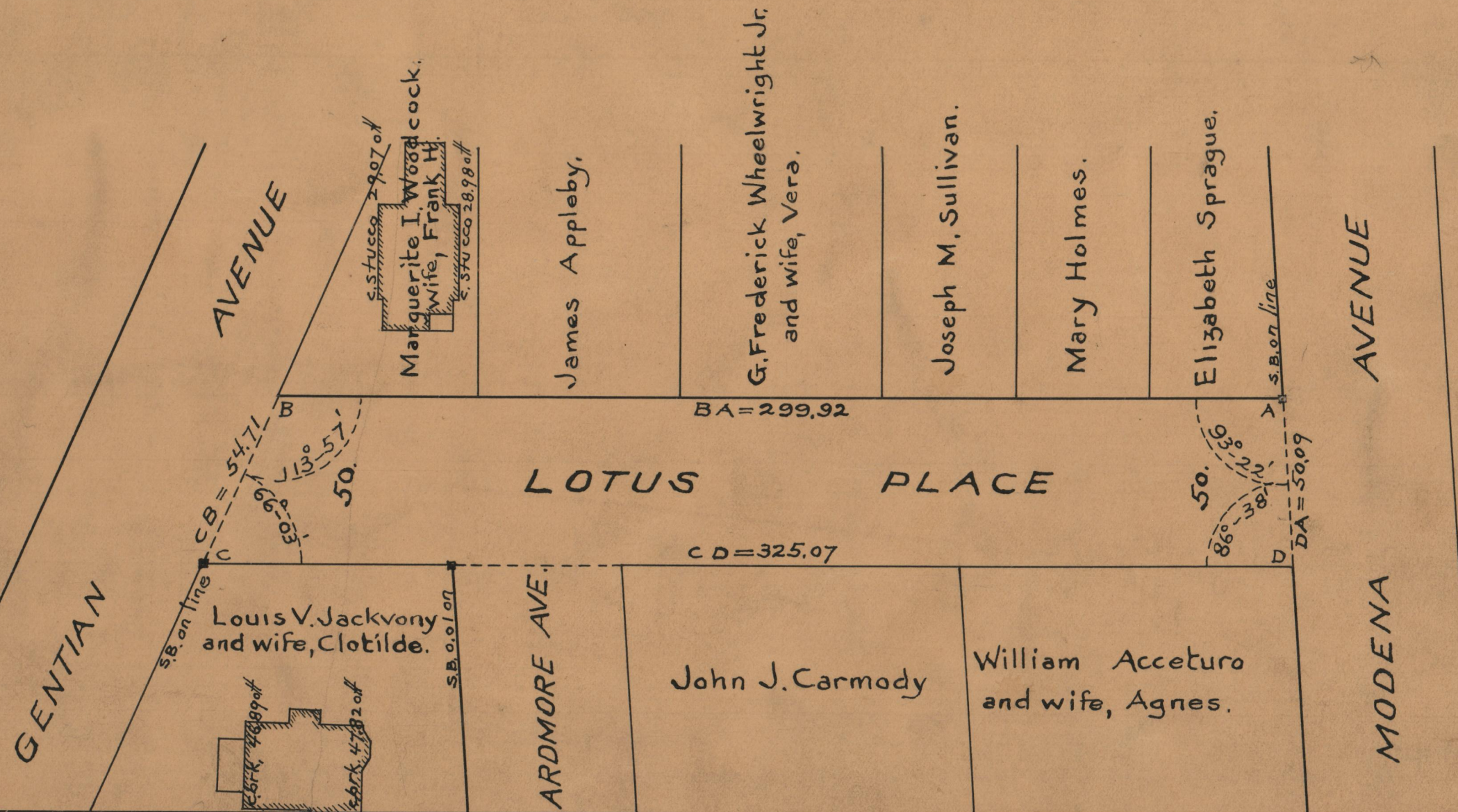
FROM

MODENA AVENUE TO GENTIAN AVENUE.

BOARD OF ALDERMEN.

MAY 6, 1929.

SCALE 1"=40'



OFFICE No.	24784
DRAWER	86
SHEET	A-51