

PLAT OF

HYMER STREET

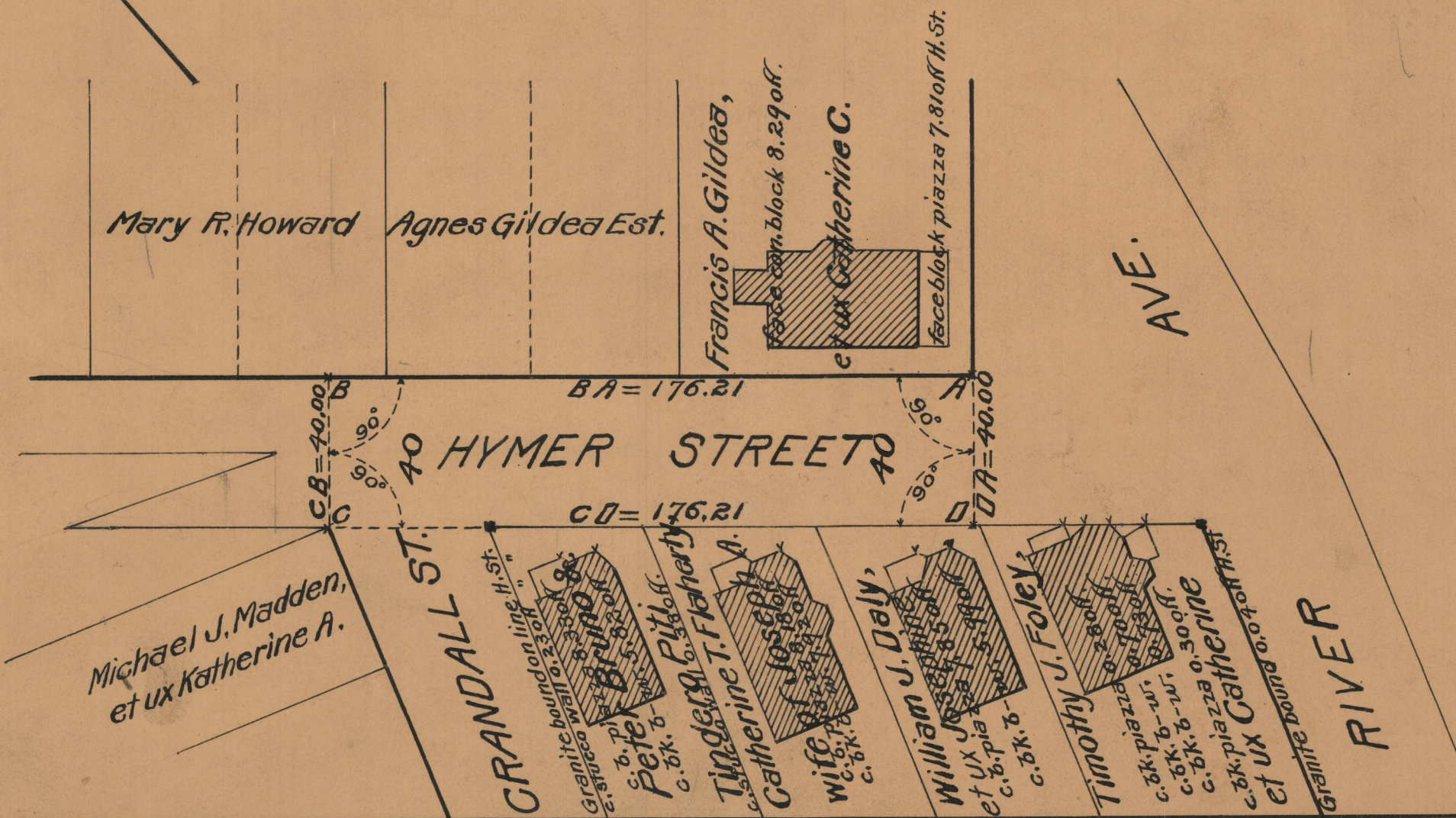
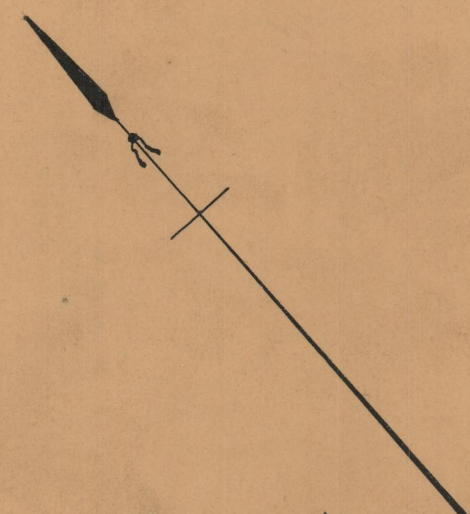
FROM RIVER AVE. TO THE WEST LINE OF GRANDALL ST.

SCALE 40 FEET PER INCH

DECLARED AND ESTABLISHED A PUBLIC HIGHWAY BY RESOLUTION

OF THE BOARD OF ALDERMEN

NOVEMBER 15, 1928



OFFICE No.	24593
DRAWER	86
SHEET	A-5