

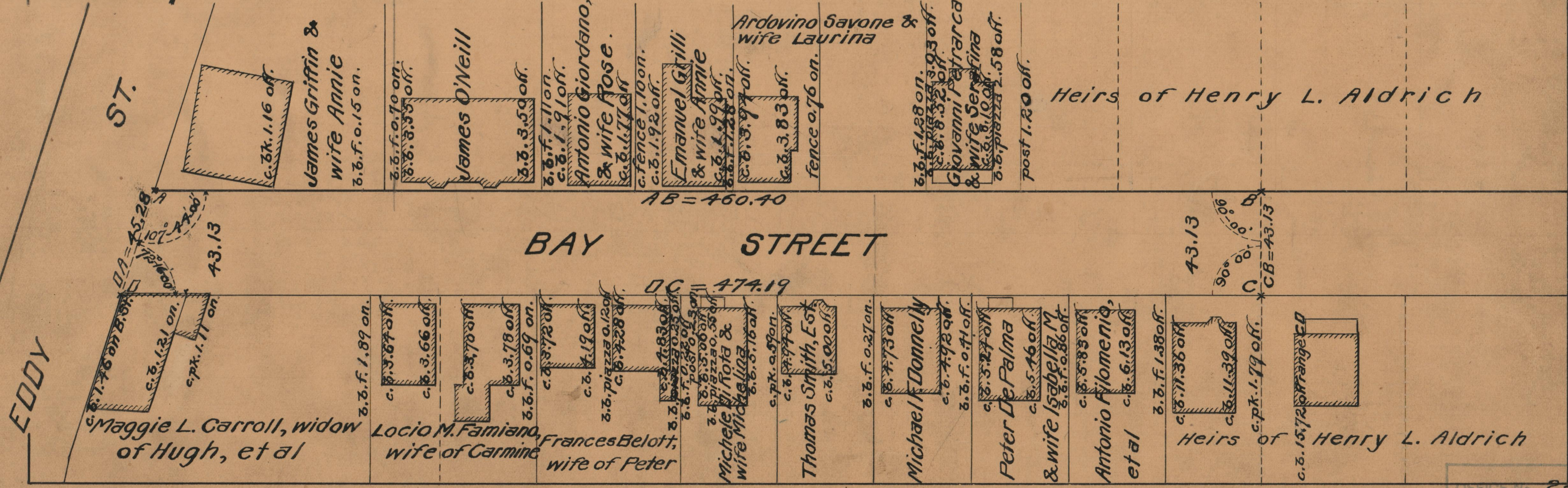
PROVIDENCE, R.I.
CITY ENGINEER'S OFFICE
STREET LINE DEPT.
July 15, 1929.
051977

PLAT OF BAY STREET

FROM
EDDY ST. TO A POINT ABOUT 467 FEET EAST.

BOARD OF ALDERMEN
AUGUST 1, 1929

Scale 1" = 40'



OFFICE No.	24757
DRAWER	86
SHEET	A-47