

PROVIDENCE, R.I.
CITY ENGINEER'S OFFICE
STREET LINE DEPT.
July 9, 1929.
051957

PLAT OF
JOHNSON STREET

FROM
RUGBY ST. TO EDDY ST.
BOARD OF ALDERMEN
AUGUST 1, 1929

Scale 1" = 40'

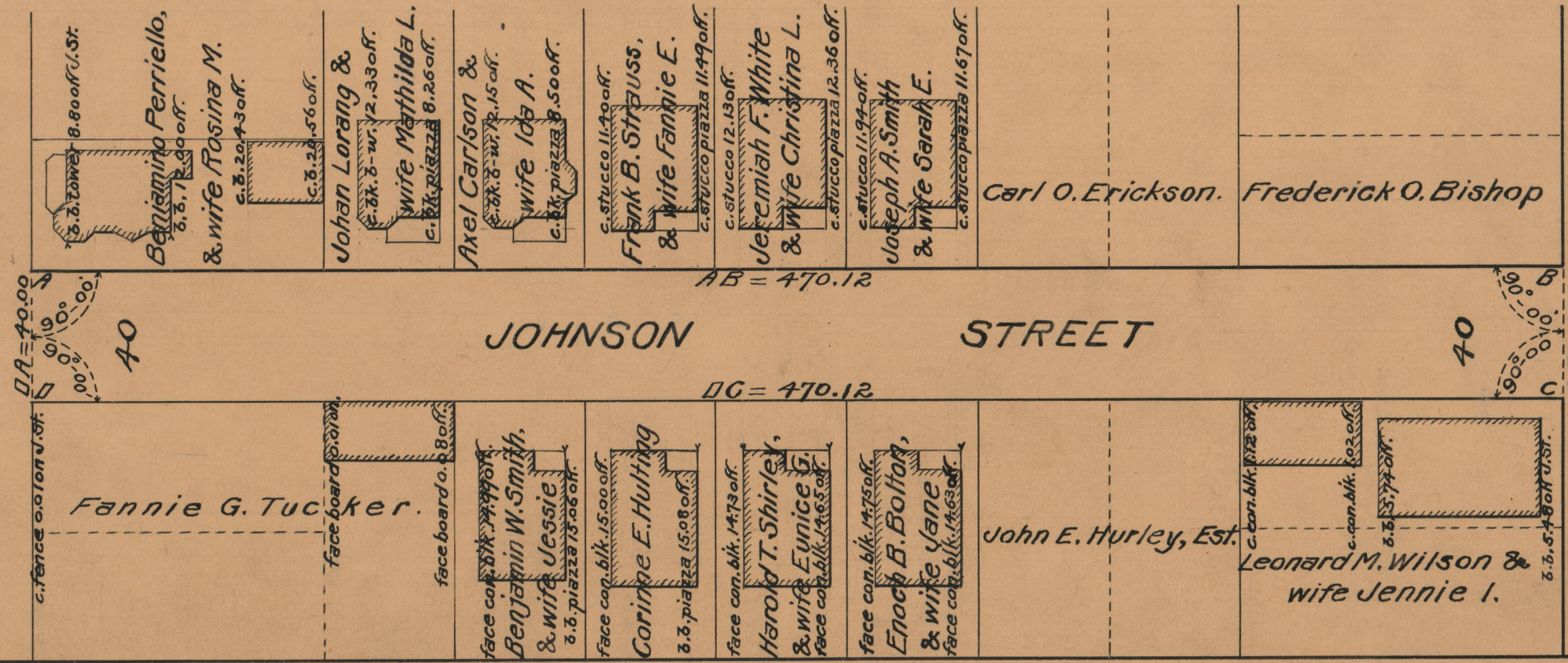


RUGBY ST.

RUGBY

EDDY ST.

EDDY



OFFICE No. 24746
DRAWER 86
SHEET A-45