

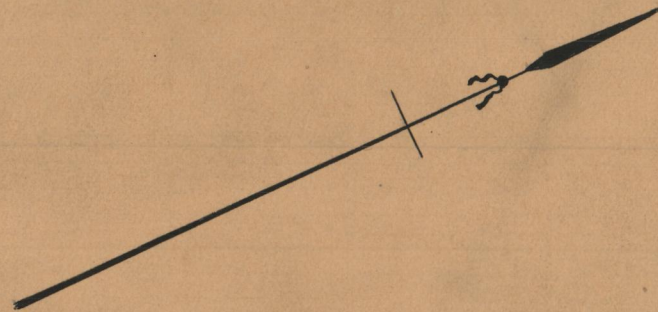
PLAT OF
PURITAN STREET

FROM
POTTERS AVE. TO HUNTINGTON AVE.

BOARD OF ALDERMEN.

AUGUST 1, 1929.

Scale 1" = 40'



HUNTINGTON AVE.

POTTERS AVE.

POTTERS AVE.

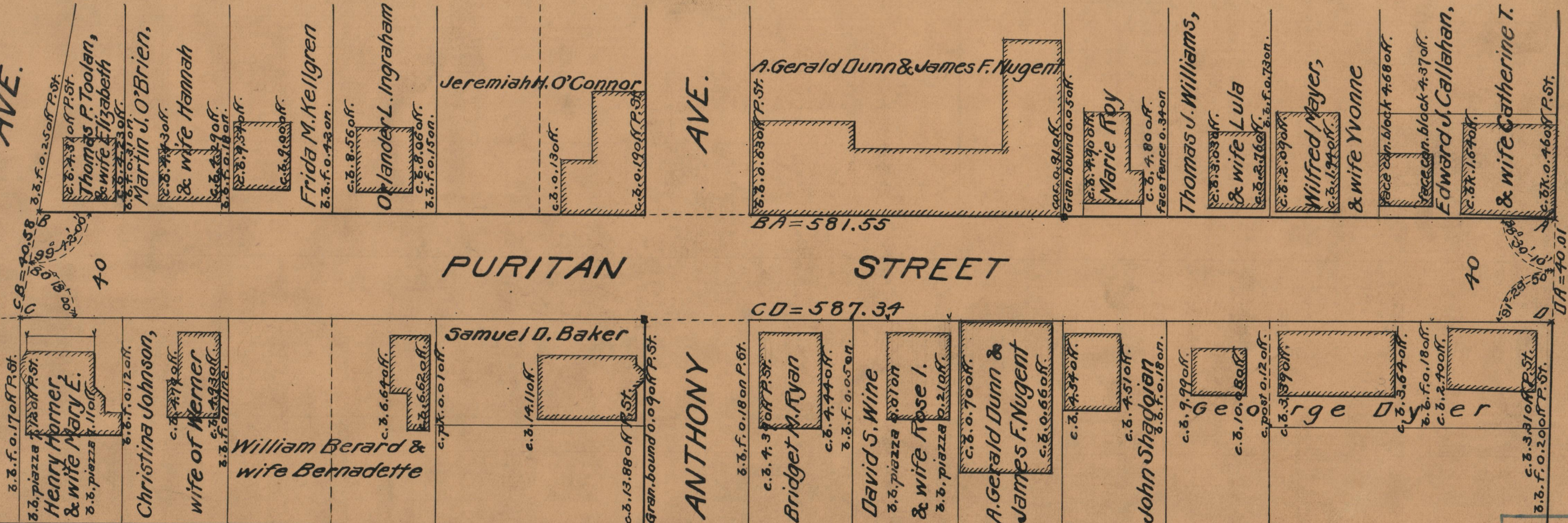
HUNTINGTON

POTTERS

PURITAN STREET

BA = 581.55

CD = 587.34



OFFICE No. 24734
DRAWER 86
SHEET A-44