

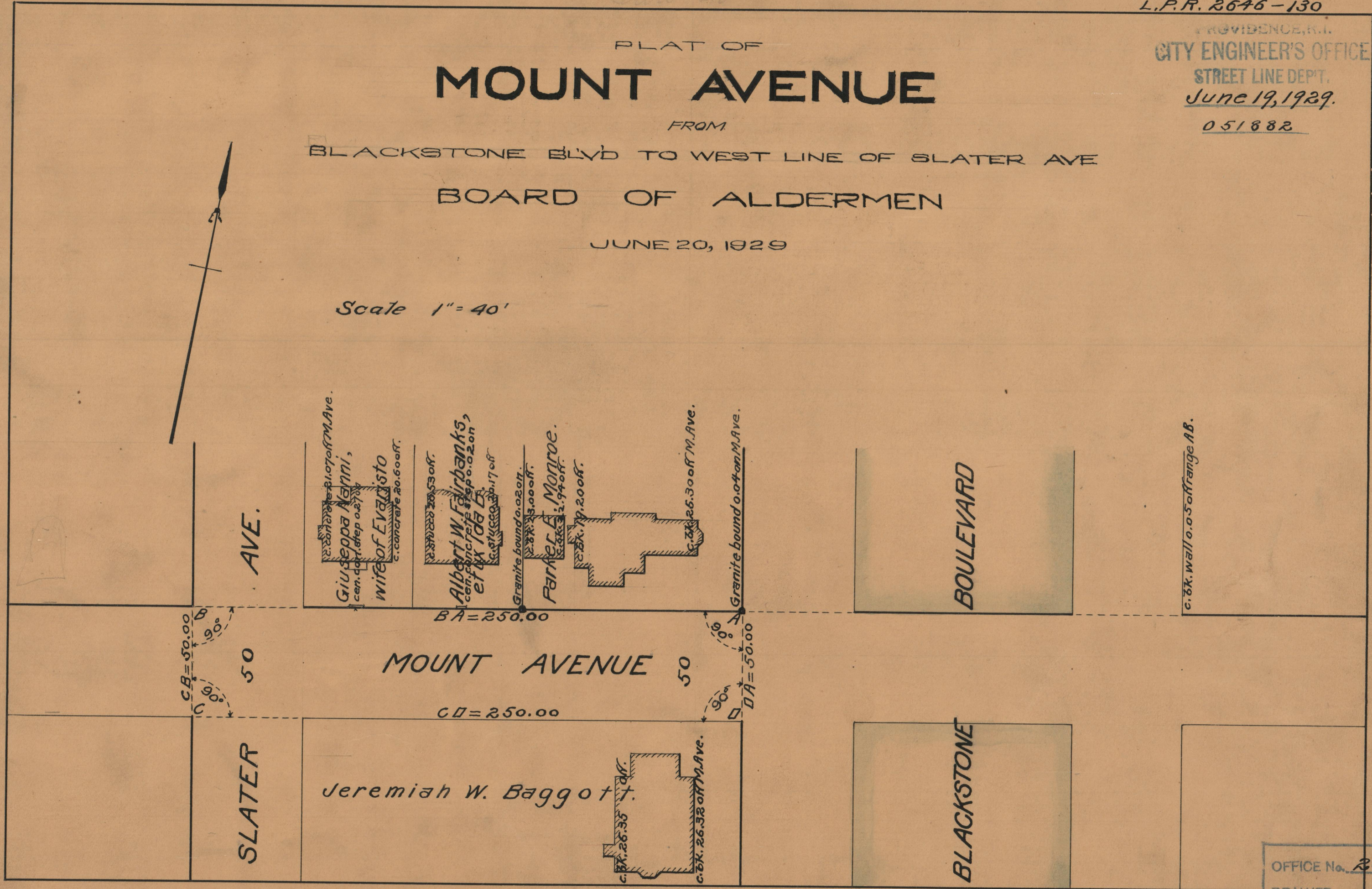
PLAT OF
MOUNT AVENUE

FROM
BLACKSTONE BLVD TO WEST LINE OF SLATER AVE

BOARD OF ALDERMEN

JUNE 20, 1929

Scale 1" = 40'



AVE.

Giuseppa Nanni,
wife of Evaristo
c. bk. 26.32 off M. Ave.
c. concrete 20.60 off.

Albert W. Fairbanks,
et ux Ida B.
c. bk. 26.32 off M. Ave.
c. concrete 20.60 off.

Parmer A. Monroe.
c. bk. 26.32 off M. Ave.
c. concrete 20.60 off.

Granite bound 0.04 on M. Ave.
c. bk. 26.32 off M. Ave.
c. concrete 20.60 off.

BOULEVARD

c. bk. wall 0.05 off range AB.

CB = 50.00
90°
90°

50

MOUNT AVENUE

50

CD = 250.00

90°
90°
DA = 50.00

SLATER

Jeremiah W. Baggot

c. bk. 26.32 off M. Ave.
c. bk. 26.32 off M. Ave.

BLACKSTONE

OFFICE No. 24709
DRAWER 86
SHEET A-36