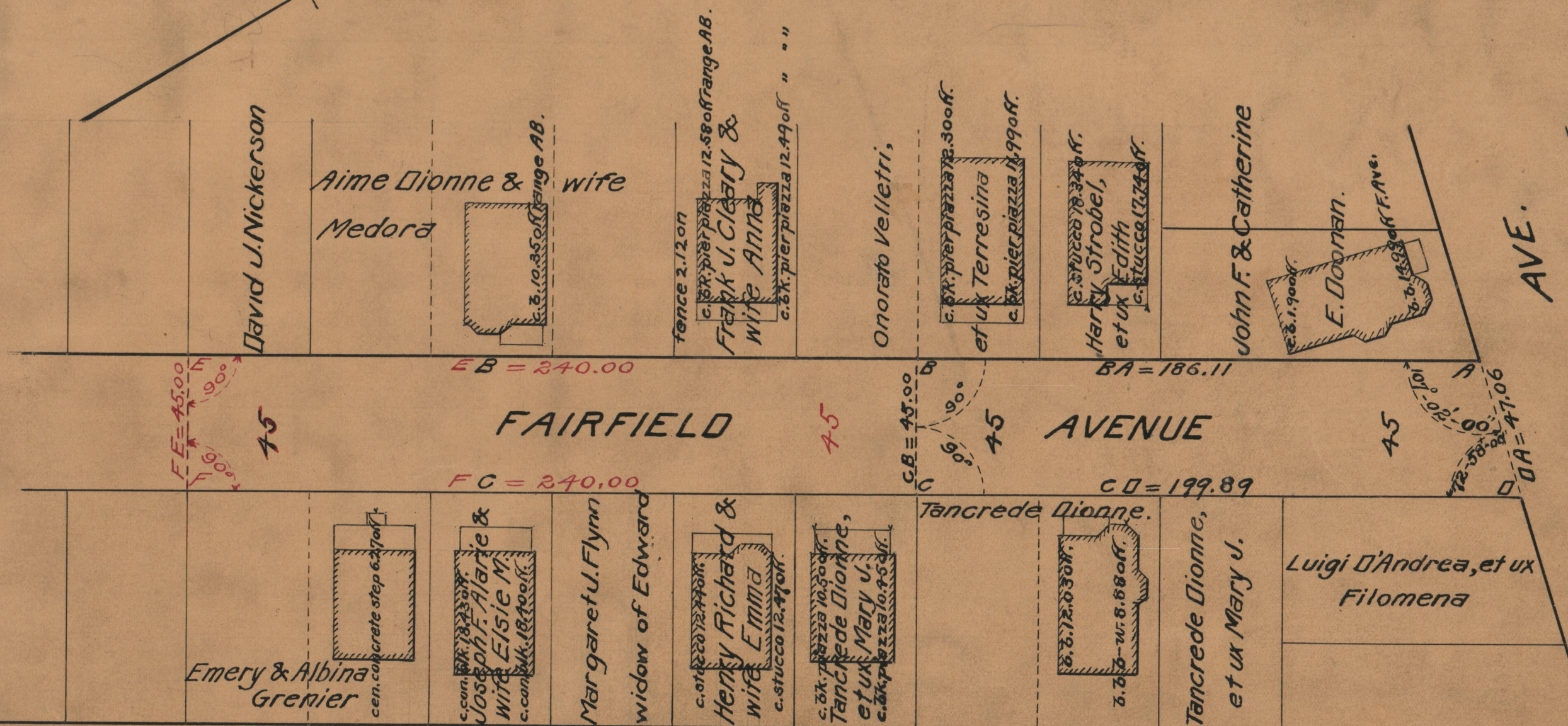
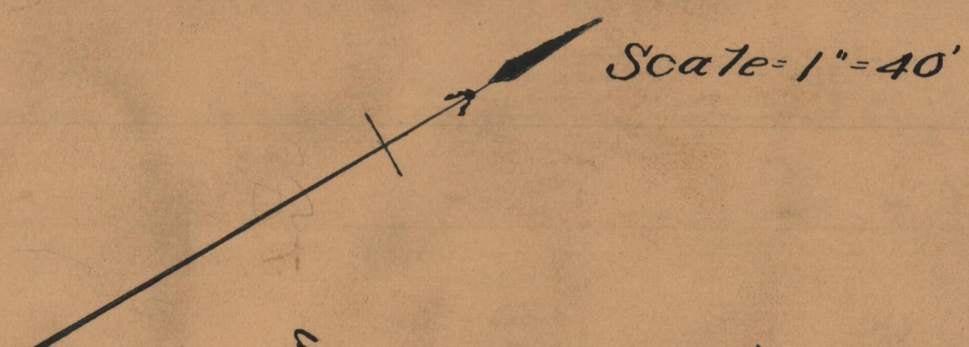


PLAT OF FAIRFIELD AVENUE

FROM
MANTON AVE. TO A POINT 193 FEET SOUTH
BOARD OF ALDERMEN

JUNE 20, 1929.

FROM PORTION RECEIVED TO 240 FEET SOUTH
OCTOBER 17, 1929.



MANTON

AVE.

OFFICE No.	24708
DRAWER	86
SHEET	A-35