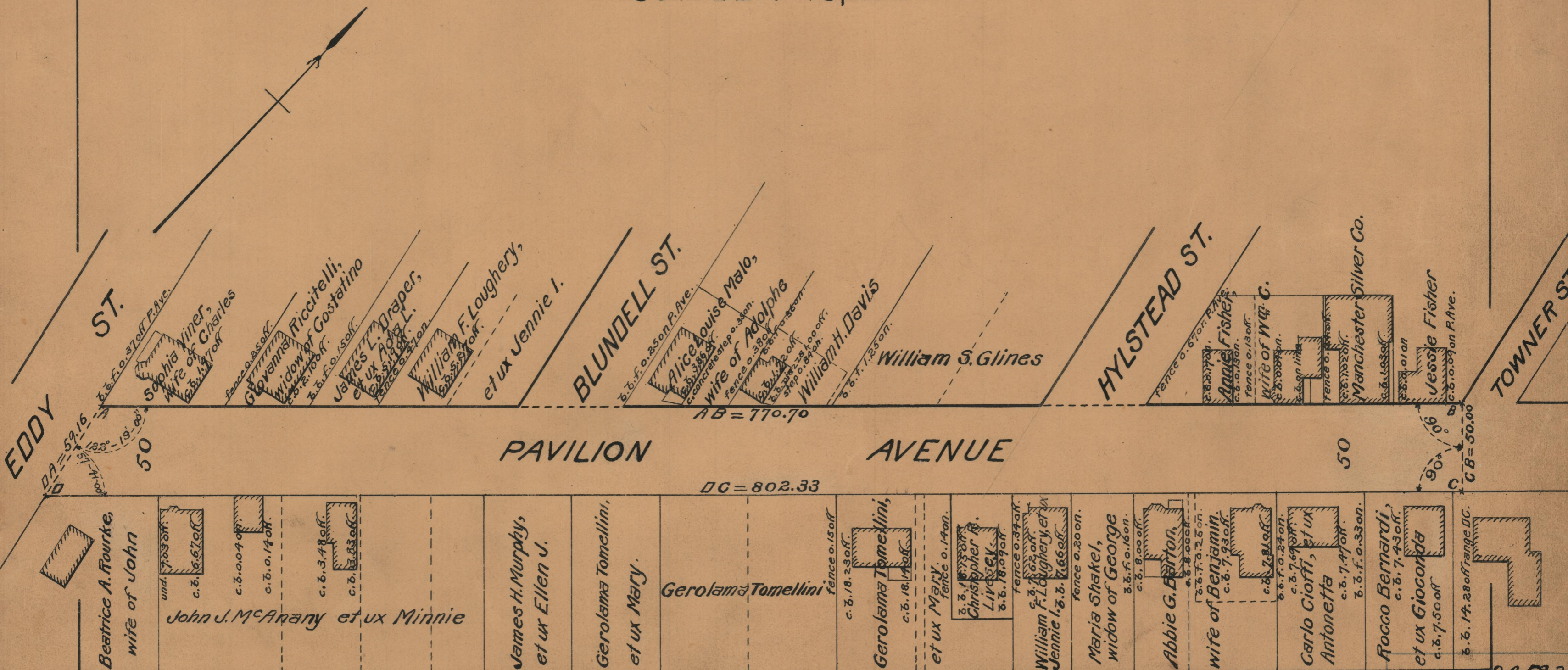


PROVIDENCE, R.I.
CITY ENGINEER'S OFFICE
STREET LINE DEPT.
Oct. 29, 1928.

051168

PLAT OF PAVILION AVENUE

FROM EDDY ST. TO TOWNER ST.
SCALE 50 FEET PER INCH
DECLARED A PUBLIC HIGHWAY BY RESOLUTION
OF THE BOARD OF ALDERMEN
OCTOBER 18, 1928



OFFICE No. 24583
 DRAWER " 86
 SHEET " A-3

86
A-3