

PROVIDENCE, R.I.
CITY ENGINEER'S OFFICE
STREET LINE DEPT.

May 8, 1929.
051745.

PLAT OF
FAIROAKS AVENUE

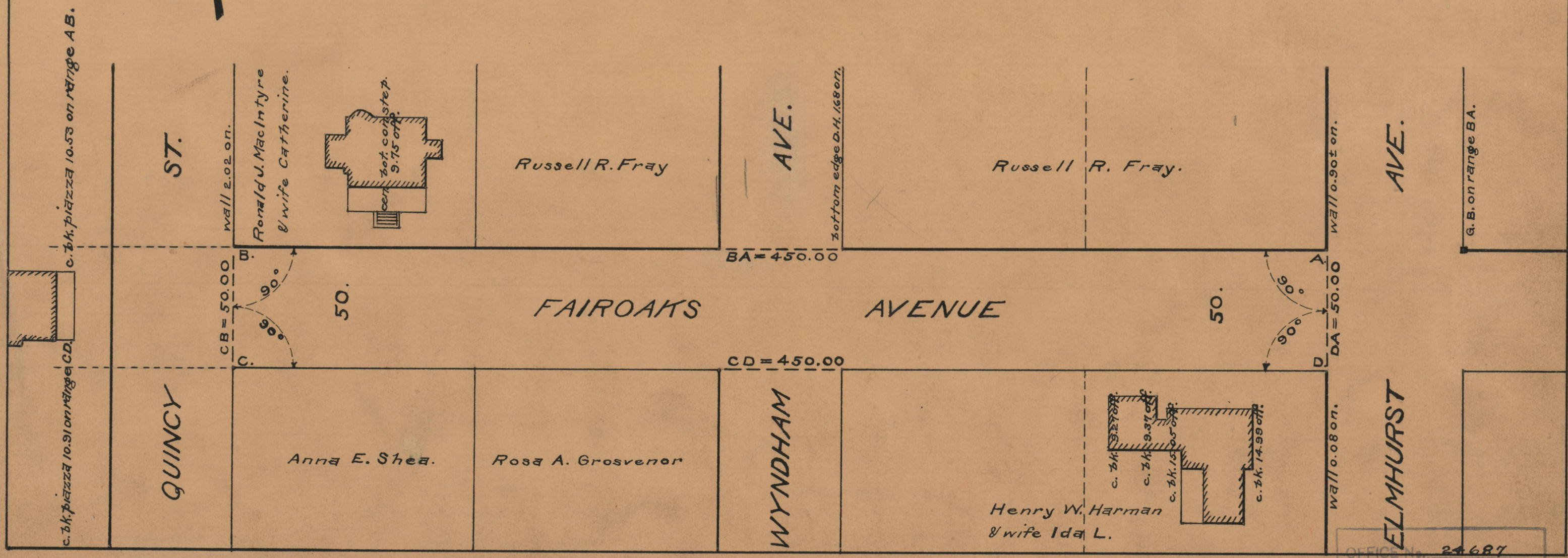
FROM
ELMHURST AVE. TO QUINCY ST.

BOARD OF ALDERMEN

FEBRUARY 21, 1929.



Scale 1" = 40'



OFFICE No.	24687
DRAWER	86
SHEET	A-27