

*April 30, 1929.*

051680

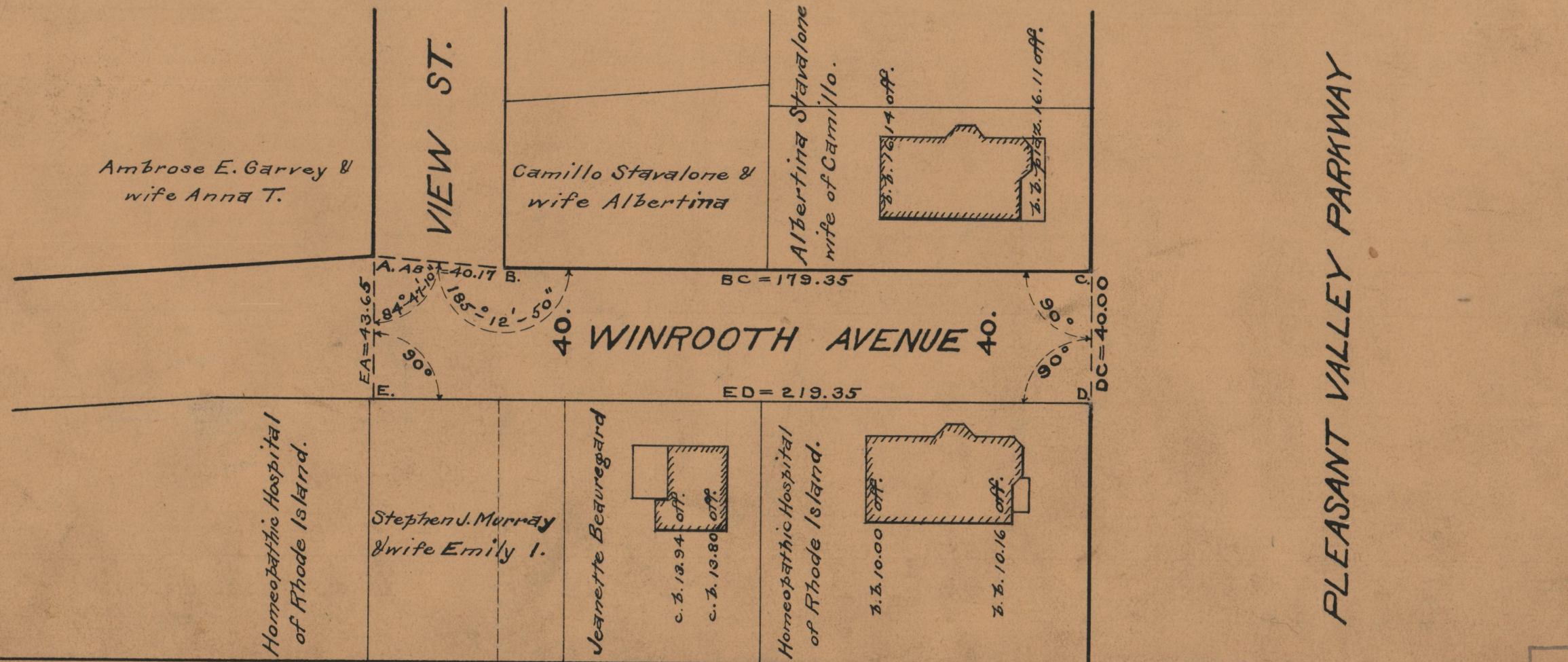
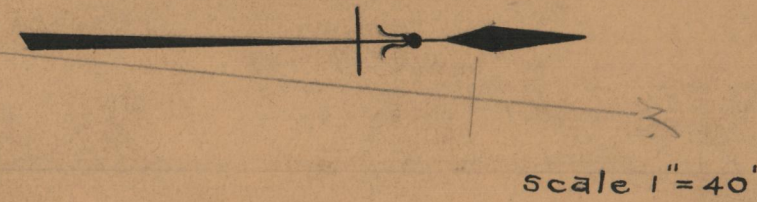
PLAT OF  
**WINROOTH AVENUE**

FROM

THE RANGE OF THE SOUTH LINE OF VIEW ST. TO PLEASANT VALLEY PARKWAY.

BOARD OF ALDERMEN .

FEBRUARY 21, 1929.



OFFICE No.	24681
DRAWER	86
SHEET	A-26