

L.P.R. 2646-80-1-6

PROVIDENCE, R.I.
CITY ENGINEER'S OFFICE

STREET LINE DEPT.

April 13, 1929.

051550

PLAT OF DANA STREET

FROM
IVY ST. TO CAMP ST. AND ROCHAMBEAU AVE.
BOARD OF ALDERMEN
APRIL 18, 1929

Scale 1"=40'



ST.

ROCHAMBEAU AVE.

ST.

CAMP

IVY

Mary A. Doyle
wife of Thos. F. Doyle
c. bk. 0.62 of D. St.
b. b. f. 0.47 of f.

Mary F. Stritch.
b. b. f. 0.27 of f.
c. bk. 0.38 of f.

Mary A. Greamer.
b. b. f. 0.25 of f.

John E. Gonlin.
b. b. f. 0.18 of f.
c. bk. piazza 6.92 of f.

Joseph H. Coen.
c. bk. piazza 7.00 of f.

Roxana F. Church.
c. con. block 15.12 of f.
c. con. block 15.07 of f.

William B. Anthony,
et ux Helen F.
b. b. piazza 6.88 of f.
b. bk. piazza 6.83 of f.

George A. Melin,
et ux Adele B.
c. bk. 12.34 of f.
c. bk. 12.29 of U. St.

Herbert F. Maine,
et ux Avis E.
c. bk. 19.89 of f.
c. bk. 19.86 of f.

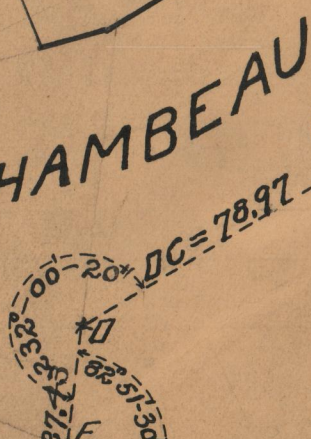
Eugene J. Hickey.

Brown University.

William F. Field,
et ux Joseetta S.
c. bk. 19.90 of f.

Joseph A. Auger,
et ux Evangelina
c. iron post 9.82 of f.
c. bk. 19.91 of U. St.

c. iron post 0.14 of U. St. FA = 50.00



50

DANA STREET

50

OFFICE No. 27665
DRAWER " 86
SHEET " A-22